

# Kernel Migrator for Exchange

How to use the solution?

A decorative graphic at the bottom of the slide consists of several overlapping, semi-transparent geometric shapes in shades of blue, green, yellow, and orange, creating a stylized mountain or abstract landscape effect.

# Contents

- 1. Introduction .....2
- 2. Steps for performing a successful migration .....3
- 3. Pre-Migration Analysis (Optional) .....3
- 4. Agent Configuration (Optional) .....3
- 5. Mailbox Configuration.....3
- 6. GAL Synchronization (Optional) .....3
- 7. Create Project .....4
- 8. Add Job.....4
- 9. Outlook Rules and Permissions .....6
- 10. Profile Manager (Optional) .....6
- 11. Conclusion .....6
- 12. Support .....7
- 13. Copyright .....7
- 14. Warranty Disclaimers and Liability Limitations.....7
- 15. Trademarks.....8

## 1. Introduction

This guide helps you use Kernel Migrator for Exchange to perform any of the supported migrations. Please refer to “Supported Migration Type” document to know which migrations can be performed using the solution.



## 2. Steps for performing a successful migration

Below is a summary of the steps needed in order to perform an Exchange Migration. This document goes into some detail regarding each of these steps.

1. (Optional) Use “Pre-Migration” to have an idea about the time and agents required to complete the migration
2. Use “Agent Configuration” to add the agents that will share the load of Exchange Migration
3. (Optional) Use “Mailbox Configuration” to migrate the limits, properties, and permissions of user mailboxes and Public Folders
4. (Optional) Use “GAL Synchronization” to update the Global Address List of Source Exchange Server at the Target Exchange Server
5. Add a Project
6. Add a Mailbox Migration Job in the Project for migrating the User Mailboxes
7. Add a Public Folder Migration Job in the Project for migrating the Public Folders
8. Run or schedule the migration job
9. Use “Outlook Rules and Permissions” to migrate the Rules and Permissions of Outlook of Source Exchange Server to Target Exchange Server
10. (Optional) Use “Profile Manager” to update the Outlook profiles of Source Exchange Server at the Target Exchange

## 3. Pre-Migration Analysis (Optional)

Pre-Migration is an optional step. It is a prediction of how the solution will handle the migration and may differ from the actual migration. However, it does give a fairly accurate prediction of the required time and agents needed to perform the complete Exchange Migration.

## 4. Agent Configuration (Optional)

The solution lets you add the networked computers as agents to run the mailbox migration. It lets you share the migration load between the different computers.

## 5. Mailbox Configuration (Optional)

Mailbox Configuration lets you migrate the limits, properties and permissions of the user mailboxes and Public Folders from the Source Exchange Server to the Target Exchange Server.

## 6. GAL Synchronization (Optional)

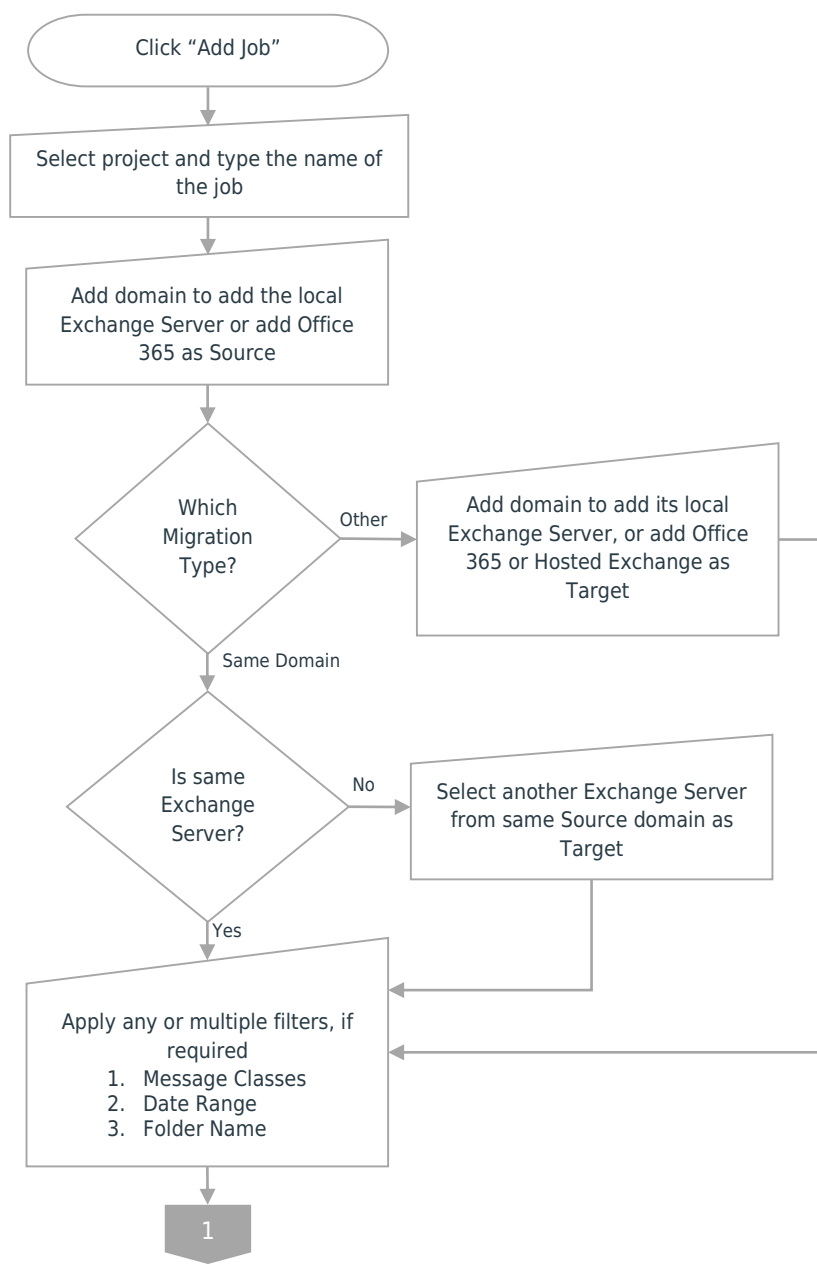
GAL Synchronization lets you update the Global Address List of the Target Exchange with respect to the source objects. You can also update the Global Address List of the Source Exchange with respect to the target objects.

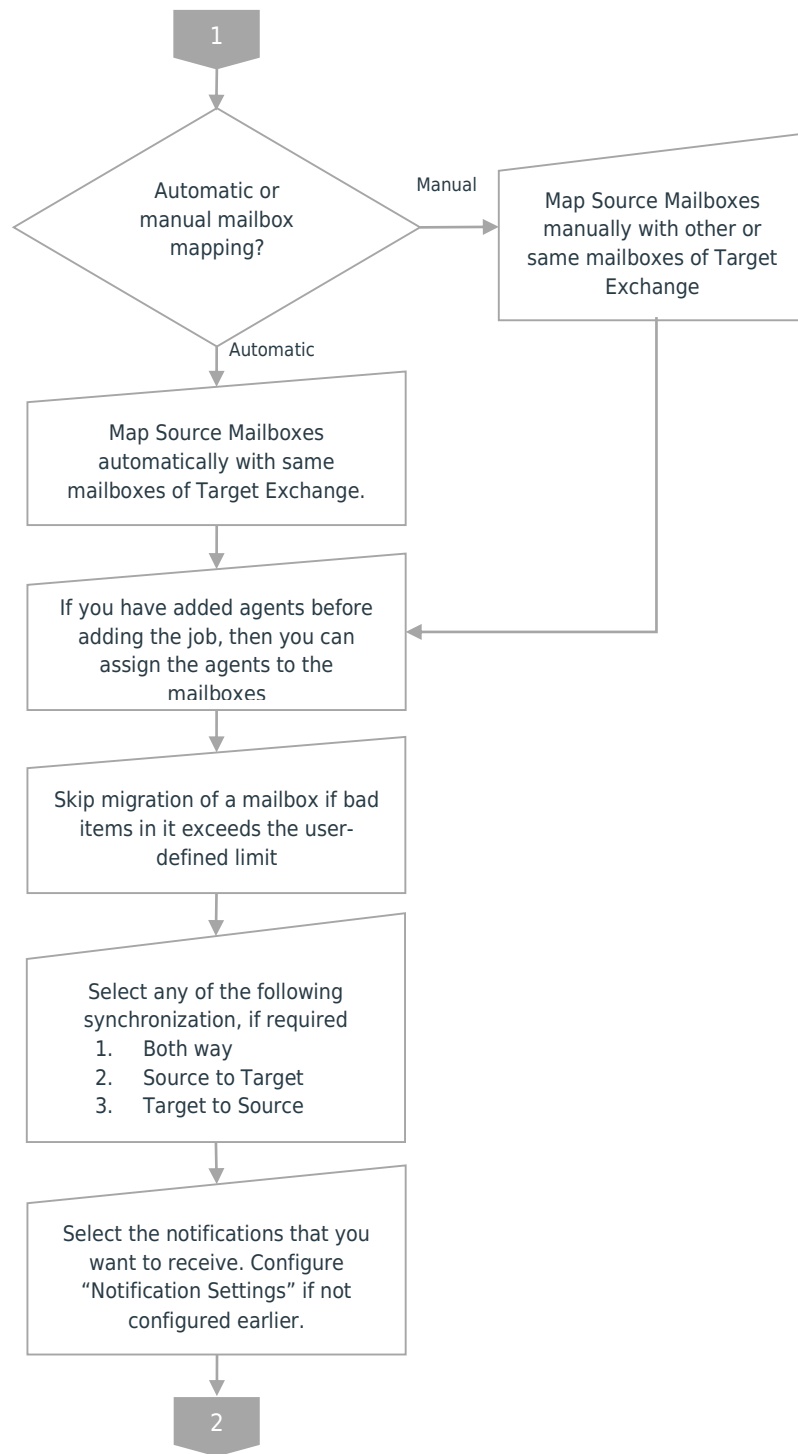
## 7. Create Project

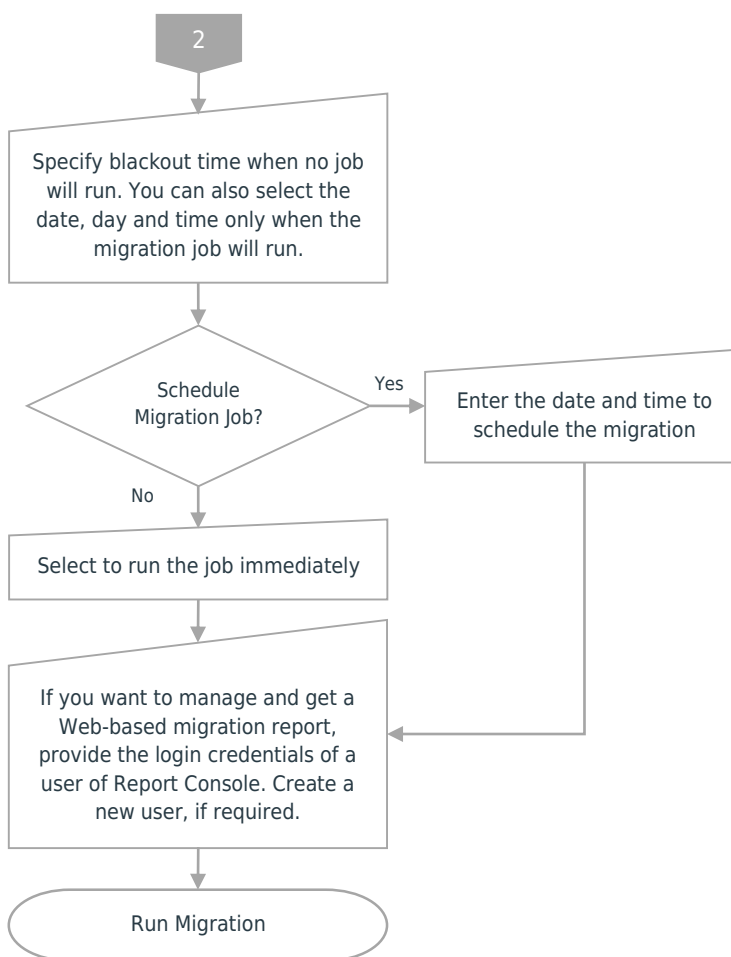
You have to create a project to perform an Exchange Migration. Click “Add Project” to access the dialog box.

## 8. Add Job

Here, you can add the migration jobs you wish to perform. One job can be created for either User Mailboxes or Public Folders. You cannot add both User Mailboxes and Public Folders in the same job.







## 9. Outlook Rules and Permissions

Kernel Migrator for Exchange lets you migrate Outlook rules and permissions of Source Exchange Server users to the Target Exchange Server.

## 10. Profile Manager (Optional)

Profile Manager lets you migrate the Outlook profiles of the users of Source Exchange Server to the Target Exchange Server.

## 11. Conclusion

Kernel Migrator for Exchange is an easy way of migrating between Exchange Servers and/or Office 365. By following the steps mentioned in this document, you should be able to perform any migration supported by the solution.

To read more about the benefits of the solution, please visit <https://www.nucleustechnologies.com/exchange-migration/>

## 12. Support

If you are having any issues, please contact a member of our team:

### Product experts

USA/Canada: +1-866-348-7872

UK/Europe: +0-808-189-1438

Rest of the World: +91 (0) -981-872-5861

You can also visit <https://www.nucleustechnologies.com/Contact.html> to chat live with our team and to know more about our support team.

You can email your queries to the following addresses:

[sales@nucleustechnologies.com](mailto:sales@nucleustechnologies.com) for Sales

[support@nucleustechnologies.com](mailto:support@nucleustechnologies.com) for Support

## 13. Copyright

Kernel Migrator for Exchange, any and all components, any and all accompanying software, files, data and materials, this guide, and other documentation are copyright of KernelApps Private Limited, with all rights reserved under the copyright laws. This user guide cannot be reproduced in any form without the prior written permission of KernelApps Private Limited. No Patent Liability is assumed, however, on the use of the information contained herein.

© KernelApps Private Limited, All Rights Reserved.

## 14. Warranty Disclaimers and Liability Limitations

Kernel Migrator for Exchange, any and all components, any and all accompanying software, files, data, and materials are distributed and provided AS IS and with no warranties of any kind, whether expressed or implied. In particular, there is no warranty for any harm, destruction, impairment caused to the system where these are installed. You acknowledge that good data processing procedure dictates that any program, listed above, must be thoroughly tested with non-critical data before there is any reliance on it, and you hereby assume the entire risk of all use of the copies of Kernel Migrator for Exchange covered by this License. This disclaimer of warranty constitutes an essential part of this License.

In no event does KernelApps Private Limited authorize you or anyone else to use Kernel Migrator for Exchange in applications or systems where Kernel Migrator for Exchange's failure to perform can reasonably be expected to result in a significant physical injury, or in loss of life. Any such use is entirely at your own risk, and you agree to hold KernelApps Private Limited harmless from any and all claims or losses relating to such unauthorized use.

## 15. Trademarks

Kernel Migrator for Exchange is registered trademark of KernelApps Private Limited.

All other brand names, product names, logos, registered marks, service marks and trademarks (except above of KernelApps Private Limited.) appearing in this document are the sole property of their respective owners. These are purely used for informational purposes only. We have compiled a list of such trademarks, but it may be possible that a few of them are not listed here.

Windows®, Microsoft Exchange®, Office 365®, Microsoft Outlook®, and Active Directory® are either registered trademarks or trademarks of Microsoft Corporation in the United States and/or other countries.