



Kernel for Writer

“Repair corrupt and damaged documents
of OpenOffice Writer (.odt files)”

PRODUCT GUIDE

Table of Contents

1. Introduction to Kernel for Writer	5
1.1 Using this Manual	5
1.2 About Kernel for Writer.....	6
1.3 Salient Features	6
1.4 Who Should Use this Software?	6
2. Getting Started	7
2.1 Installation Pre-requisites.....	7
2.2 Downloading Kernel for Writer for the First Time.....	8
2.3 Install Kernel for Writer.....	8
2.4 Start Kernel for Writer	8
2.5 Uninstall Kernel for Writer	8
3. Software Interface	10
3.1 Menu-bar.....	10
3.2 Tool-bar.....	12
3.3 Status Bar	13
3.4 Buttons Used.....	13
3.5 Customize User Interface.....	13
4. Repairing .odt Files	14
5. Full Version	15
5.1 Requirement of Full Version.....	15
5.2 Purchasing Full Version.....	15
6. Support.....	16
7. Troubleshooting	17
7.1 Common Issues	17
7.2 Frequently Asked Questions	17
8. Legal Notices	18
8.1 Copyright	18
8.2 Trademark.....	18

8.3 Disclaimer 18

8.4 License Agreement 19

Table of Figures

Figure 3.1: File Menu 10

Figure 3.2: View Menu 11

Figure 3.3: Help Menu 11

Figure 3.4: Status Bar 13

1. Introduction to Kernel for Writer

Welcome to the user manual for Kernel for Writer, the most effective and convenient .odt file repair tool available that repairs corrupt Open Office Writer documents. This user manual comprises step by step guidelines on using Kernel for Writer.

1.1 Using this Manual

This user manual is intended to guide users on using Kernel for Writer. We suggest that first time users should read this user manual completely and carefully before proceeding to use the software. However, if you are an experienced user, you can use the table of contents to find out information pertaining to the tasks that you need to perform by using Kernel for Writer. You can use the table of contents to navigate through different sections of this user manual. The table of contents lists all the sections that are contained in this user manual in chronological order. The user manual comprises the following sections:

- Introduction
- Getting Started
- Software Interface
- Repairing .odt files
- Full Version
- Support
- Troubleshooting
- Legal Notice

Certain abbreviations have been used throughout this manual. For clear understanding of the contents of this user manual, please go through the list of abbreviations, mentioned below, before reading the manual.

1.1.1 List of Abbreviations

ODT: Open Document

MS: Microsoft

RAM: Random Access Memory

MB: Mega-Byte

GB: Giga-Byte

1.2 About Kernel for Writer

Kernel for Writer is file repair and data recovery software for Open Office Writer. This software repairs Open Office Writer document files that become inaccessible due to unexpected system shutdown, power failure, virus attacks, media errors, etc.

You might be familiar with the following error messages if you have encountered Open Office Writer .odt file corruption before:

- The file is corrupt and therefore cannot be reopened. Should OpenOffice.org repair the file?
- General Input/Output error
- The file could not be repaired therefore cannot be reopened

Kernel for Writer quickly and effectively resolves the above mentioned errors by repairing corrupt .odt, keeping the complete document format intact. It restores tables, bullets, embedded images, headers, footers, font style, hyperlinks, Unicode characters, OLE objects and all other components of the corrupt Writer document.

1.3 Salient Features

Salient features of Kernel for Writer include:

- Efficient embedded repair algorithms to quickly repair even heavy files
- Support for all versions of Open Office Writer
- User friendly graphical user interface
- Support for batch repair of .odt files
- Free demo to test the capabilities of the tool before purchasing it

1.4 Who Should Use this Software?

The capability of Kernel for Writer to repair large sized .odt files makes it appropriate for use by professional authors who keep their important data stored in Open Office Writer documents. The software is also suitable for other Open Office Writer users who have lost their important data stored in .odt files due to .odt file corruption. This corruption could have been caused due to virus attacks, improper system shutdown, installation of unsupported software, etc.

2. Getting Started

Now that you have understood the features and potential of Kernel for Writer, you are ready to get a hands-on experience of the software. To start repairing .odt files, you will first need to download and install this software. However, it is strongly recommended that before installing Kernel for Writer, you should go through the installation pre-requisites for the software to ensure that your computer is appropriately configured to run the software.


2.1 Installation Pre-requisites

The various pre-requisites for installing and running Kernel for Writer can be broadly classified into two major categories— Hardware requirements and Software requirements.

2.1.1 Hardware Requirements:

The hardware requirements for installing the software are as follows:

- Pentium class processor
- Minimum 64MB RAM (128 MB recommended)
- 10MB for Software installation
- Disk Space - Enough space to store the repaired files

 You should have at least 10 MB of free disk space if you want to repair and save a 10 MB .odt file.

2.1.2 Software Requirements:

The software requirements for installing the software can further be grouped into two categories— Operating system requirements and Open Office version requirements. The requirements are as follows:

2.1.2.1 Operating System Requirements

Supported operating systems:

- Windows Vista
- Windows XP
- Windows 2003
- Windows 2000

2.1.2.2 Open Office Version Requirements

Supported Open Office versions:


- All versions of Open Office

2.2 Downloading Kernel for Writer for the First Time

After checking your computer with the prescribed system requirements for Kernel for Writer, you can download and install the software on your computer. You can buy the full version of the software from any one of our authorized resellers– Element5, Asknet and 2CO.

If you want to try using Kernel for Writer before buying it, you can download the evaluation version from the following link:

<http://www.nucleustechologies.com/download-writer-recovery.php>

 You can repair .odt files saved on your system by using the evaluation version of Kernel for Writer; however, the repaired file will display the text 'Demo' instead of the original text until you purchase the full version of the software.

2.3 Install Kernel for Writer

After downloading the installer file for Kernel for Writer, you can install the software by running the file. To install Kernel for Writer:

1. Double-click the Kernel for Writer installer.
2. Follow the on-screen instructions.

The **Setup Installation Complete** screen will be displayed.

3. Click Finish to launch the software.

2.4 Start Kernel for Writer

To start Kernel for Writer:

Click the **Start → All Programs → Kernel for Writer**

Alternatively, you can launch Kernel for Writer by double-clicking the shortcut icon available on the desktop and Quick Launch icon.


2.5 Uninstall Kernel for Writer

You may need to uninstall and re-install Kernel for Writer. To uninstall Kernel for Writer:

1. Click the **Start → All Programs → Kernel for Writer → Uninstall Kernel for Writer**

A warning message will be displayed.

2. Click **Yes** to uninstall Kernel for Writer.

 Before proceeding to uninstall Kernel for Writer, you must ensure that the software is not running.

You can alternatively uninstall Kernel for Writer from the **Control Panel** by performing the following steps:

1. Click the **Start Menu → Control Panel** and then double click the **Add or Remove Programs** icon.
2. Select **Kernel for Writer** and click **Remove**.

A warning message will be displayed.

3. Click **Yes** to uninstall Kernel for Writer.

3. Software Interface

Now that Kernel for Writer has been installed on your computer, you can start using the software after getting acquainted with the software interface.

3.1 Menu-bar

The menu-bar of Kernel for Writer comprises three main menus– File, View, and Help.

3.1.1 File Menu

The **File** menu comprises four menu items.

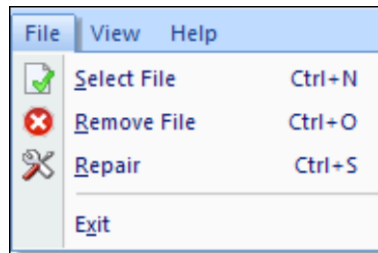


Figure 3.1: File Menu

Menu items in the **File** menu:

Field Name	Field Description
Select File	Select to browse and list corrupt .odt files stored on your hard disk
Remove File	Select to remove selected files from the list
Repair	Select to start the repairing corrupt files
Exit	Select to close the software

3.1.2 View Menu

The **View** menu comprises three menu items.

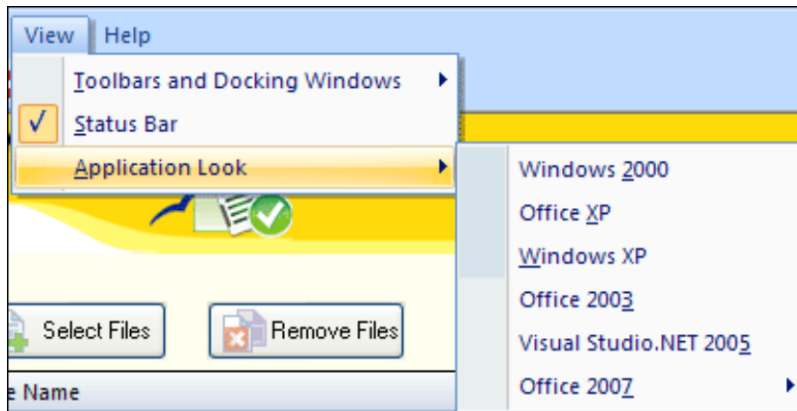


Figure 3.2: View Menu

Menu Items in the View menu:

Field Name	Field Description
Toolbars and Docking Windows	Select to show or hide Tool bar/Standard bar
Status Bar	Select to show or hide Status bar
Application Look	Select to change the software theme

3.1.3 Help Menu

The **Help** menu comprises three menu items.

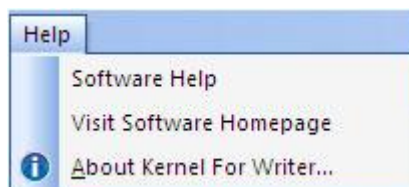





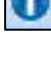
Figure 3.3: Help Menu

Menu items in the Help menu:

Field Name	Field Description
Software Help	Select to view help information pertaining to performing various tasks using Kernel for Writer.
Visit Software Homepage	Select to visit software homepage on our website
About Kernel For Writer	Select to view version-related and support information of Kernel for Writer

3.2 Tool-bar

The tool-bar in Kernel for Writer is displayed below the menu-bar. The tool-bar provides a convenient and user-friendly method to perform certain actions that can also be performed by using the menu-bar. Read the information in the table below to find out about the tool-bar buttons:

Button	Button Name	Button Description
	Select File(s)	Select to browse and list corrupt .odt files stored on your hard disk
	Remove File(s)	Select to remove selected files from the list
	Repair File(s)	Select to start the repairing of corrupt odt files
	About	Select to view version-related and support information of Kernel for Writer

You can display or hide the tool-bar by using the **Toolbars and Docking Windows** menu item in the **View** menu of the menu-bar.

3.3 Status Bar

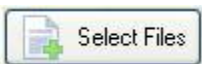
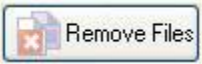

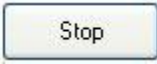
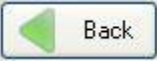
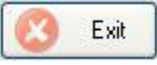
Status bar is displayed at the bottom of the software window. The text 'Ready' is displayed on the status bar if Kernel for Writer is ready to be used. Status bar also displays the text 'CAP', 'NUM', 'SCRL' which respectively correspond to the Caps Lock, Num Lock, and Scroll Lock keys on your keyboard. If any of these keys are pressed, the color of the corresponding text will turn blue/black.



Figure 3.4: Status Bar

3.4 Buttons Used

Apart from the standard options available in the menu-bar and the tool-bar, three buttons– **Select File**, **Remove File**, and **Next**–are displayed on the main window.

	Click to browse and select the .odt file that needs to be repaired
	Click to remove selected files from the list of .odt files
	Click to repair and save the files
	Click to stop the repair and save process
	Click to view main window of the software
	Click to close the software

3.5 Customize User Interface

You can customize the theme of Kernel for Writer by selecting your desired theme from the **Application Look** menu item in the **View** menu. You can add or remove toolbar buttons by clicking:




→**Standard**→**Add or Remove Buttons** in the toolbar and selecting appropriate buttons.

4. Repairing .odt Files

Now that you have complete familiarity of the user interface of Kernel for Writer, you are ready to repair .odt files. To repair .odt files:


1. Launch Kernel for Writer.
2. Click the **Select Files** button to browse and list corrupt ODT files.

 You can select multiple .odt files to repair them in one repair cycle. You can remove any file from the list by selecting the file from the list and clicking **Remove Files**.

3. Click **Next** to start with the .odt file repairing process. After you click **Next**, the software asks you to define the location to save the repaired file.
4. Browse to your desired location and click **OK**.

As soon as the Kernel for Writer finishes the repairing and saving process, it displays the message '**The repairing process was completed successfully**' along with a link that points to the location where the repaired .odt files are saved.

5. Click the link to view the repaired files or click **OK** to close the message box.

 The names of the repaired .odt files will be the original file name prefixed by the text 'REC'.

5. Full Version

Although you can use Kernel for Writer evaluation version for free and experience the capabilities of the software, there are certain features that are not available in the evaluation version.

5.1 Requirement of Full Version

By using the evaluation version of Kernel for Writer, you can repair corrupt .odt files; however, you cannot view the original content of the repaired files. The text 'Demo' will be displayed instead of text and images, software will display any three images from the document.

You will need to buy the full version of the software to view the original content of the .odt files.

5.2 Purchasing Full Version

You can buy the full version of Kernel for Writer from any one of our authorized resellers – Element 5, Asknet and 2CO.

As soon the purchase transaction with our resellers gets completed, our sales team will send you an email comprising the URL to download the full version of Kernel for Writer and activation details of the software.

6. Support

We have an extensive and efficient support system in place to assist our customers with all issues related to using Kernel for Writer. The software comes with an embedded help manual that can be accessed by clicking **Help→Software Help** in the menu-bar. You can also press the F1 key on the keyboard of your computer to access the embedded help of Kernel for Writer.

You can access the online help for Kernel for Writer at <http://www.nucleustechnologies.com/Online-Helps.html>

We also have live support wherein you can chat with our software experts at <http://www.nucleustechnologies.com/Support.html> . To talk on phone with our software experts call:

Help line:

+91-9818725861

1-866-348-7872 (Toll Free for USA)

You can also email us about your queries at;

sales@nucleustechnologies.com for Sales

support@nucleustechnologies.com for Support

contact@nucleustechnologies.com for General Queries

7. Troubleshooting

This section deals with your generic and specific queries pertaining to using Kernel for Writer.

7.1 Common Issues

Why does Kernel for Writer have limitations in evaluation copy?

The free evaluation version of Kernel for Writer is intended to enable you to experience the capabilities of the software. You will need to buy the software to view and save restricted text and images.

7.2 Frequently Asked Questions

How to Buy Kernel for Writer?

You can buy Kernel for Writer online at <http://www.nucleustechnologies.com/buy-writer-recovery.php> .

I have lost my full version for Kernel for Writer. Can you help me?

Please email us at sales@nucleustechnologies.com. Please include your name, address, email address, and order confirmation number (if you have it). We will be happy to help you.

I cannot view the toolbar. How can I view it?

The tool-bar in Kernel for Writer is by default visible. It might have become invisible by someone accidentally changing the settings

Click **View→Toolbars and Docking Windows→Standard** to make the tool-bar visible again.

8. Legal Notices

This section comprises the legal specification about Kernel for Writer and the company LEPIDE SOFTWARE PRIVATE LIMITED

8.1 Copyright

LEPIDE SOFTWARE PRIVATE LIMITED, Kernel for Writer accompanied user manual and documentation are copyright of LEPIDE SOFTWARE PRIVATE LIMITED, with all rights reserved. Under the copyright laws, this user manual cannot be reproduced in any form without the prior written permission of LEPIDE SOFTWARE PRIVATE LIMITED. No Patent Liability is assumed, however, with respect to the use of the information contained herein.

© LEPIDE SOFTWARE PRIVATE LIMITED. All rights reserved.

8.2 Trademark

Kernel for Writer® is a copyright work of LEPIDE SOFTWARE PRIVATE LIMITED.

Windows 95®, Windows 98®, Windows ME®, Windows NT®, Windows 2000 Server®, Windows 2000 Advanced Server®, Windows 2003 Server®, Windows XP®, Windows Vista, MS-DOS and Open Office are registered trademarks of Microsoft Corporation and Sun Microsystems, Inc.

All other brand and product names are trademarks or registered trademarks of their respective companies.

8.3 Disclaimer

The Information contained in this manual, including but not limited to any product specifications, is subject to change without notice. LEPIDE SOFTWARE PRIVATE LIMITED provides no warranty with regard to this manual or any other information contained here in and here by expressly disclaims any implied warranties of merchantability or fitness for any particular purpose with regard to any of the foregoing LEPIDE SOFTWARE PRIVATE LIMITED assumes no liability for any damages incurred directly or indirectly from any technical or typographical errors or omissions contained herein or for discrepancies between the product and the manual. In no event shall LEPIDE SOFTWARE PRIVATE LIMITED, be liable for any incidental, consequential special, or exemplary damages, whether based on tort, contract or otherwise, arising out of or in connection with this manual or any other information contained herein or the use there of.

8.4 License Agreement

Kernel for Writer Copyright © by LEPIDE SOFTWARE PRIVATE LIMITED

Your Agreement to this License

You should carefully read the following terms and conditions before using, installing or distributing this software, unless you have a different license agreement signed by LEPIDE SOFTWARE PRIVATE LIMITED. The terms and conditions of this License describe the permitted use and users of each Licensed Copy of Kernel for Writer. For purposes of this License, if you have a valid license, you have the right to use a single Licensed Copy of Kernel for Writer.

Scope of License

Each Licensed Copy of Kernel for Writer may either be used by a single person or used non-simultaneously by multiple people who use the software personally installed on a single workstation. All rights of any kind in Kernel for Writer, which are not expressly granted in this License, are entirely and exclusively reserved to and by LEPIDE SOFTWARE PRIVATE LIMITED. You may not rent, lease, modify, translate, reverse engineer, decompile, disassemble, or create derivative works based on, Kernel for Writer, nor permit anyone else to do so. You may not make access to Kernel for Writer available to others in connection with a service bureau, application service provider, or similar business, nor permit anyone else to do so.

Warranty Disclaimers and Liability Limitations

Kernel for Writer, and any and all accompanying software, files, data and materials, are distributed and provided AS IS and with no warranties of any kind, whether expressed or implied. In particular, there is no warranty for the quality of data recovered. You acknowledge that good data processing procedure dictates that any program, including Kernel for Writer, must be thoroughly tested with non-critical data before there is any reliance on it, and you hereby assume the entire risk of all use of the copies of Kernel for Writer covered by this License. This disclaimer of warranty constitutes an essential part of this License. In addition, in no event does LEPIDE SOFTWARE PRIVATE LIMITED authorize you or anyone else to use Kernel for Writer in applications or systems where Kernel for Writer failure to perform can reasonably be expected to result in a significant physical injury, or in loss of life. Any such use is entirely at your own risk, and you agree to hold LEPIDE SOFTWARE PRIVATE LIMITED harmless from any and all claims or losses relating to such unauthorized use.

General

This License is the complete statement of the agreement between the parties on the subject matter, and merges and supersedes all other or prior understandings, purchase orders, agreements and arrangements. This License shall be governed by the laws of the State of Delhi. Exclusive jurisdiction and venue for all matters relating to this License shall be in courts and for a located in the State of Delhi, and you consent to such jurisdiction and venue. There are no third party beneficiaries of any promises, obligations or representations made by LEPIDE SOFTWARE PRIVATE LIMITED herein.

Any waiver by LEPIDE SOFTWARE PRIVATE LIMITED of any violation of this License by you shall not constitute, nor contribute to, a waiver by LEPIDE SOFTWARE PRIVATE LIMITED of any other or future violation of the same provision, or any other provision, of this License.