



Kernel for BKF

“Easily Repair Corrupt Files Created
With ntbackup.exe”

PRODUCT GUIDE

Table of Contents

1.	About Kernel for BKF	4
1.1	About the Manual.....	4
1.2	Introduction to Kernel for BKF.....	4
1.3	Salient Features	5
1.4	System Requirements.....	6
2.	Getting started with the User Interface	7
2.1	Welcome Screen	7
2.2	Menu Bar	8
2.3	Tool Bar	9
2.4	Buttons Used.....	10
3.	Install and Uninstall	10
3.1	Install Kernel for BKF	10
3.2	Uninstall Kernel for BKF.....	10
4.	Using Kernel for BKF.....	12
4.1	Add BKF Files	12
4.2	Search BKF Files	15
4.3	Save BKF Files	17
5.	Download Purchase and Register	23
5.1	Free Trial Download	23
5.2	Purchase & Register.....	24
5.3	Support.....	24
6.	Troubleshooting.....	26
6.1	Common Issues	26
6.2	Frequently Asked Questions	26
7.	Legal Notices	27
7.1	Copyright Notice.....	27
7.2	Trademarks	27
7.3	Disclaimer	27
7.4	License Agreement	27

Table of Figures

Figure 2.1: Welcome Screen.....	8
Figure 2.2: File Menu	8
Figure 2.3: Help Menu.....	9
Figure 4.1: Adding BKF Files for recovery.....	12
Figure 4.2: Added BKF Files for recovery	13
Figure 4.3: Selecting the Recovery Mode.....	14
Figure 4.4: Displaying entire recovered data from BKF file	15
Figure 4.5: Searching for a BKF File.....	16
Figure 4.6: Searched BKF Files.....	17
Figure 4.7: Saving the BKF File	18
Figure 4.8: Saving Selected Items.....	19
Figure 4.9: Providing destination to save the selected items	20
Figure 4.10: Successful saving of BKF file data.....	21
Figure 4.11: Error message generated when the software fails to save the recovered BKF file at specified location.....	21
Figure 4.12: Generated Log File on unsuccessful saving	22
Figure 4.13: Saving Individual Items.....	23

1. About Kernel for BKF

1.1 About the Manual

Welcome to the user manual of Kernel for BKF which is an output-driven tool that repairs corrupt or damaged BKF files and restores the data contained within it accurately. This user manual helps in guiding the users about using the tool efficiently. It is recommended that novice as well as experienced users should carefully go through this user manual before using the software. A user who is well aware of the software can even use table of contents for finding the particular portion of manual. The table of contents enlists all the sections described in this manual from where one can navigate through different sections of this user manual. The user manual consists of step-by-step guidelines for using Kernel for BKF. The user manual consists of the following sections:

- About Kernel for BKF
- Getting started with the User Interface
- Install and Uninstall
- Using Kernel for BKF
- Download Purchase and Register
- Troubleshooting
- Legal Notices

1.2 Introduction to Kernel for BKF

Kernel for BKF is used to recover data from corrupt BKF files. BKF is an extremely useful proprietary backup format that is used in Windows NT, 2000, XP and Server 2003. BKF files can be used to backup all your important Windows data including Exchange server data. However, BKF file is susceptible to corruption, and when that happens all your backup data becomes inaccessible as system throws different types of error messages such as “Backup file contains unrecognized data and cannot be used”, “Backup file is unusable...” etc.

Kernel for BKF is an advanced tool that can take care of all these error messages and repair damaged and corrupt BKF files irrespective of the degree of corruption. There could be so many reasons for the BKF file corruption such as virus attacks, corruption of storage media, abrupt system shutdown, damage during backup creation process, CRC (Cyclic Redundancy Check) errors, etc. Kernel for BKF works on a powerful algorithm that can recover all sorts of files from BKF. This software is a must-have tool when NTBackup could not use the corrupt BKF file. It recovers all BKF files created with MS Backup utility ntbackup.exe and Backup Exec by VERITAS software.



Working of the Software:

Working of the software is pretty simple; the entire recovery and restoration process is divided in three simple-to-follow steps:

1. Browse and add the BKF file to the application.
2. Explore and Search data from recovered files.
3. Save recovered data to desired location on the disk or remote computer or any external device.

Kernel for BKF uses two robust recovery modes to recover the data from corrupted BKF files:

- **Quick Mode:** Fastest mode of recovery that instantly recovers data from corrupt BKF files.
- **Advanced Mode:** It deeply scans the corrupted BKF file and retrieves the entire data. It is more efficient and ensures complete data retrieval.

To allow you to have hands on experience of the software before making the purchase, Kernel for BKF is also available in demo version. Using the free demo version you can evaluate the features and recovery potential of the software. This utility has got an attractive User Interface and is extremely easy to use. You can download and try the free demo version from our website; this no-obligation trial version can be downloaded within minutes and installed instantaneously. Once you are satisfied with the product's performance you can purchase the full version as mentioned in Download, Purchase and Register section.

1.3 Salient Features

Kernel for BKF is endowed with a number of useful features that makes this software extremely attractive. Some of them are mentioned as follows:

- Extremely intuitive interface makes the recovery process very simple. The scope of the software is quite broad and can handle all sorts of BKF corruption.
- Offers a simple three-step recovery process that can be performed without any guidance.
- Recovers required files from the BKF. Software allows you to search BKF and extract specific files and folders from the BKF.
- Accurately recovers file metadata such as File Modification Date, etc.
- Offers two effective recovery modes: Quick Mode & Advanced Mode to recover entire backup data.
- Enables user in adding multiple BKF files in one go.



- Performs automatic recovery using Advanced Mode when Quick Mode fails to recover the backup data.
- Allows you to save the recovered data with hierarchy and with BKF creation info.
- Makes recovery process faster by instantly loading previously saved recovery information from local disk.
- Restores the recovered data in hard disk, remote location and other external device.
- Repairs all kind of BKF files including those containing Exchange data.
- Supports all versions of BKF created using MS backup or VERITAS backup.
- Recovers data from MS Exchange BKF files.
- Generates log reports for the data that cannot be saved to desired location.
- Provides easy option to add as well as recover multiple BKF files by dragging them into the software interface.
- Software is highly compatible and runs on all popular versions of the Windows.
- Available in free-trial version.

1.4 System Requirements

Before you start installing Kernel for BKF software, make sure that your computer meets the following system requirements:

Basic System Requirements

- Pentium Class Processor
- 64 MB RAM (128 MB Recommended)
- 10 MB free space for software installation
- Enough disk space to save results

Supported Windows OS Platforms

- Windows 8
- Windows 7



- Windows Vista
- Windows XP
- Windows 2003
- Windows 2000
- Windows NT
- Windows 98
- Windows 95

2. Getting started with the User Interface

2.1 Welcome Screen

Kernel for BKF has got an extremely attractive and intuitive User Interface. On the left pane of the software all the added BKF files are displayed in a tree-like structure. The right pane of the software lists all the files within BKF along with some details such as File Type, Size and Modified. The bottom pane of the software displays all the files within BKF in a single list without any segregation based on Folder.

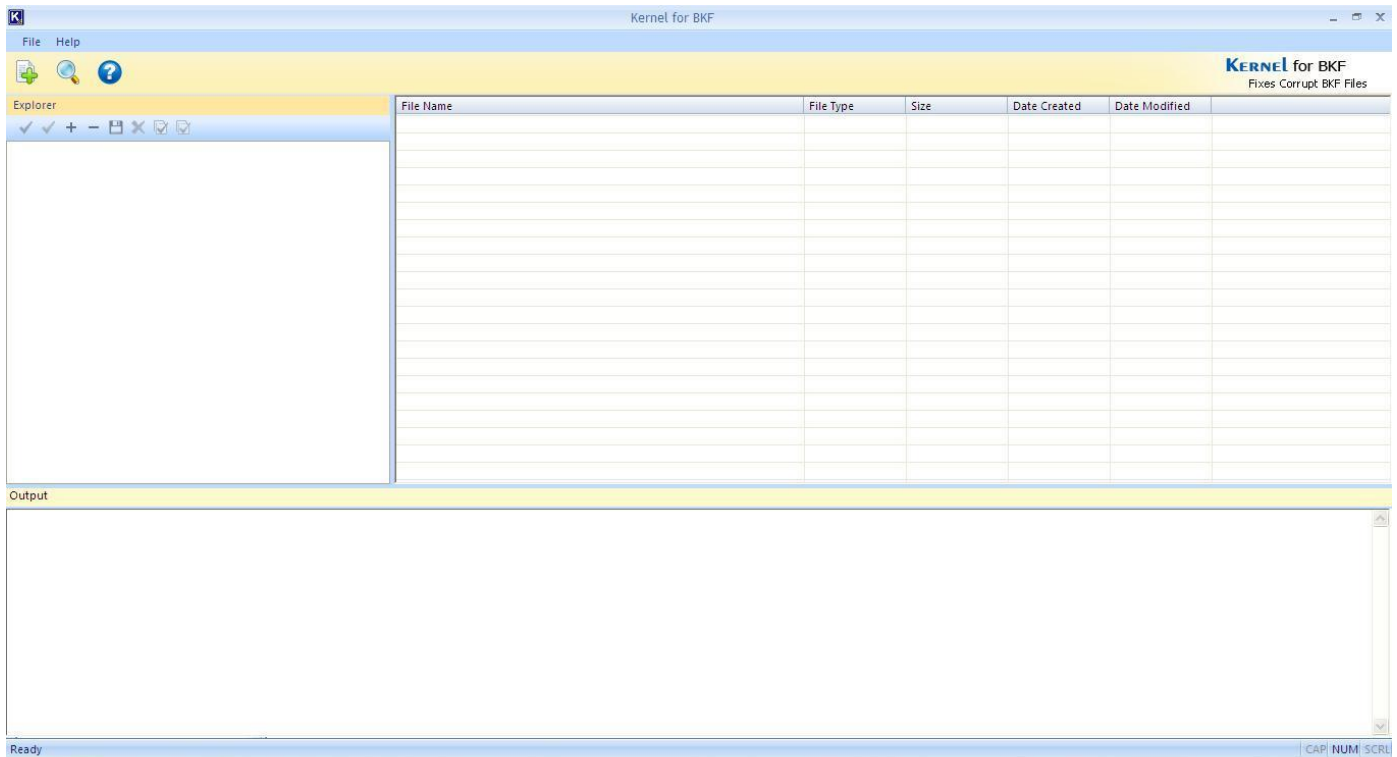


Figure 2.1: Welcome Screen of Kernel for BKF

2.2 Menu Bar

The Menu bar of Kernel for BKF comprises following two menus:

- File Menu
- Help Menu

File Menu

File menu of the Kernel for BKF software appears, as shown in the following figure:

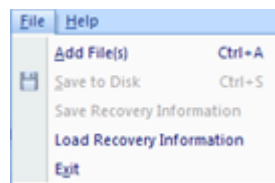


Figure 2.2: File Menu

Following table enlists the options available in the **File** menu:

Option	Description
Add File(s)	Adds BKF files to the application
Save to Disk	Saves recovered BKF file to local disk
Save Recovery Information	Saves recovery information to local disk
Load Recovery Information	Loads already saved recovery information from local disk
Exit	Exits from the Application

Help Menu

Help menu of the Kernel for BKF software appears, as shown in the following figure:






Figure 2.3: Help Menu

Following table enlists the options available in the **Help** menu:

Option	Description
Help	Launches Online Help Manual
About Kernel for BKF	Gives information about the Software
Product Home Page	Launches Product's Home Web Page



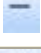



2.3 Tool Bar

Tool Bar provides easy accessibility to the Control buttons. It has following options under it:

Option	Description
	Adds corrupt BKF files to the application
	Searches a Backup file for a particular string in file name
	Launches Online Help Manual

2.4 Buttons Used

There are several buttons used in the software that helps user throughout the backup recovery process. Following table lists the buttons used in the software:

Button	Description
	Check or uncheck all folders in selected file/folder
	Expand all folders
	Collapse all folders
	Save all checked folders
	Removes all checked files from explorer
	Check all Folders

3. Install and Uninstall

3.1 Install Kernel for BKF

After being familiar with the software overview, key features, and system requirements let us install the software. However, before installing the software make sure that the software installer file is available on your computer. If the file is not available on your computer then you can download the file from our Website- <https://www.nucleustechnologies.com/Corrupted-BKF-Backup-File-Repair-Software.php>

After you have downloaded the installer file, execute the following steps to install the software:

1. Double-click the **Kernel for BKF** installer file.
2. Follow the on-screen instructions. When the installation process completes, "Setup Installation Complete" message appears on the software installation screen.
3. Click the **Finish** button to launch the software.


After you have completed the software installation process, a shortcut to start the software will be added in the Windows Start program menu. You can also start the software from Windows Start program menu.

3.2 Uninstall Kernel for BKF

User can uninstall Kernel for BKF software from computer system by using one of the following two methods:



- Uninstall from Windows Start Menu
- Uninstall from Control Panel

 **Note:** Before starting the uninstallation process, make sure that the Kernel for BKF software is not in use.

Uninstall from the Windows Start menu

Execute the following steps to uninstall Kernel for BKF from Windows Start menu:

1. Click **Start > All Programs > Kernel for BKF > Uninstall Kernel for BKF**. A warning message before uninstalling the software will be displayed on the screen.
2. Click **Yes** button to uninstall the software.
3. Click the **OK** button.

Kernel for BKF is successfully uninstalled from the computer system.

Uninstall from Control Panel

Execute the following steps to uninstall Kernel for BKF from Control Panel:

1. Click **Start > Control Panel**. The Control Panel window appears.
2. Double-click the **Add or Remove Programs** icon. A list of the programs installed on the computer system appears.
3. Select **Kernel for BKF** and click the **Remove** button. A warning message before uninstalling the software will be displayed on the screen.
4. Click the **Yes** button to uninstall the software.
5. Click the **OK** button.

Kernel for BKF is successfully uninstalled from the computer system.

4. Using Kernel for BKF

The Kernel for BKF software performs accurate recovery of corrupted, damaged and inaccessible BKF files. Using robust algorithms it extensively scans the backup files and retrieves data from them. It uses powerful algorithms that leave no stone unturned in recovering backup data from corrupted BKF. Following recovery modes are used by the software during the recovery process:

Quick Mode: Fastest mode of recovery that instantly recovers data from corrupt BKF files.

Advanced Mode: It deeply scans the corrupted BKF file and retrieves the entire data. It is more efficient and ensures complete data retrieval.

Note: If Quick Mode fails, the software automatically starts recovering BKF file using Advanced Mode.

4.1 Add BKF Files

To recover data from corrupt BKF files you first need to add those files to the application. You need to execute the following steps to add BKF files to the application.

1. Click on the **Add File(s)** option on the Tool Bar. **Add File(s)** dialog box opens up.

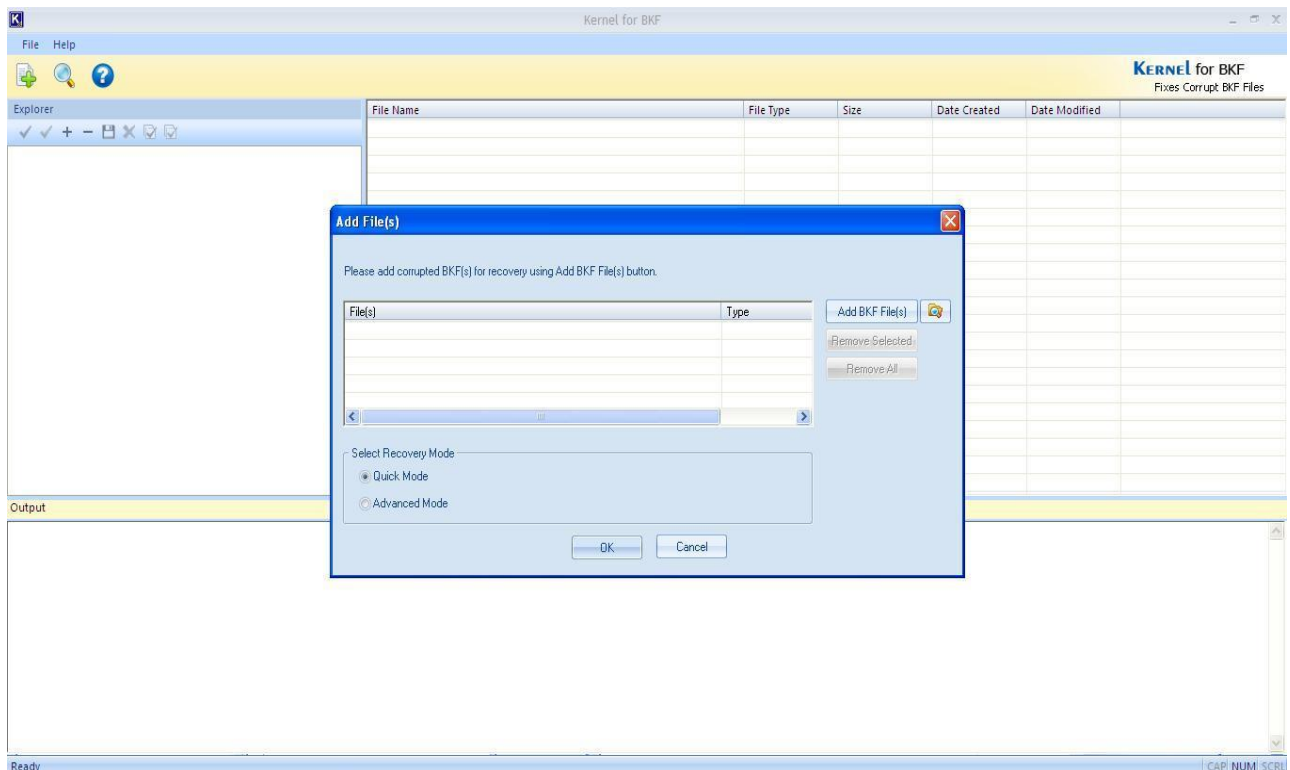


Figure 4.1: Adding BKF Files for recovery

2. Click on **Add BKF File(s)** option to browse and add BKF file(s).

Note: You can add multiple BKF files. You can also search the BKF file using the **Search** option if the location is not known to you.

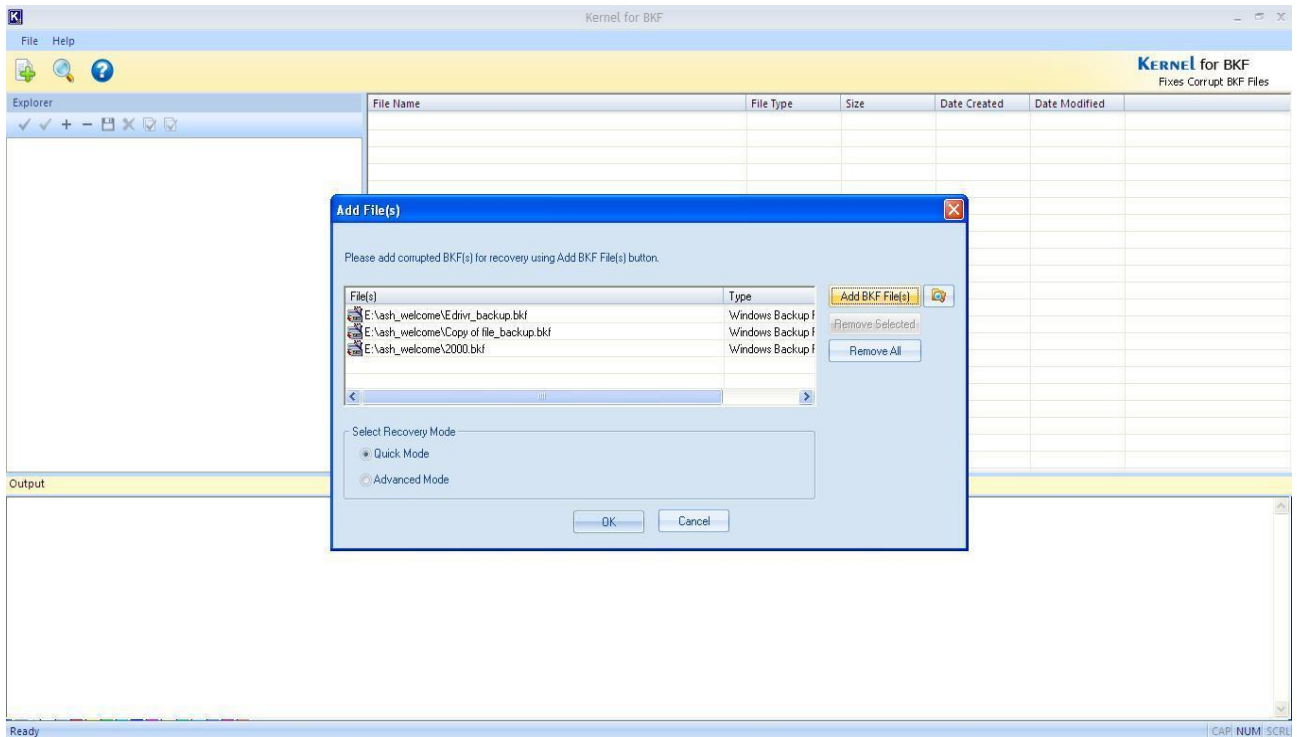


Figure 4.2: Added BKF Files for recovery

3. Select the Recovery Mode (Quick Mode or Advanced Mode). By default, Quick Mode is selected. Click **OK** button.

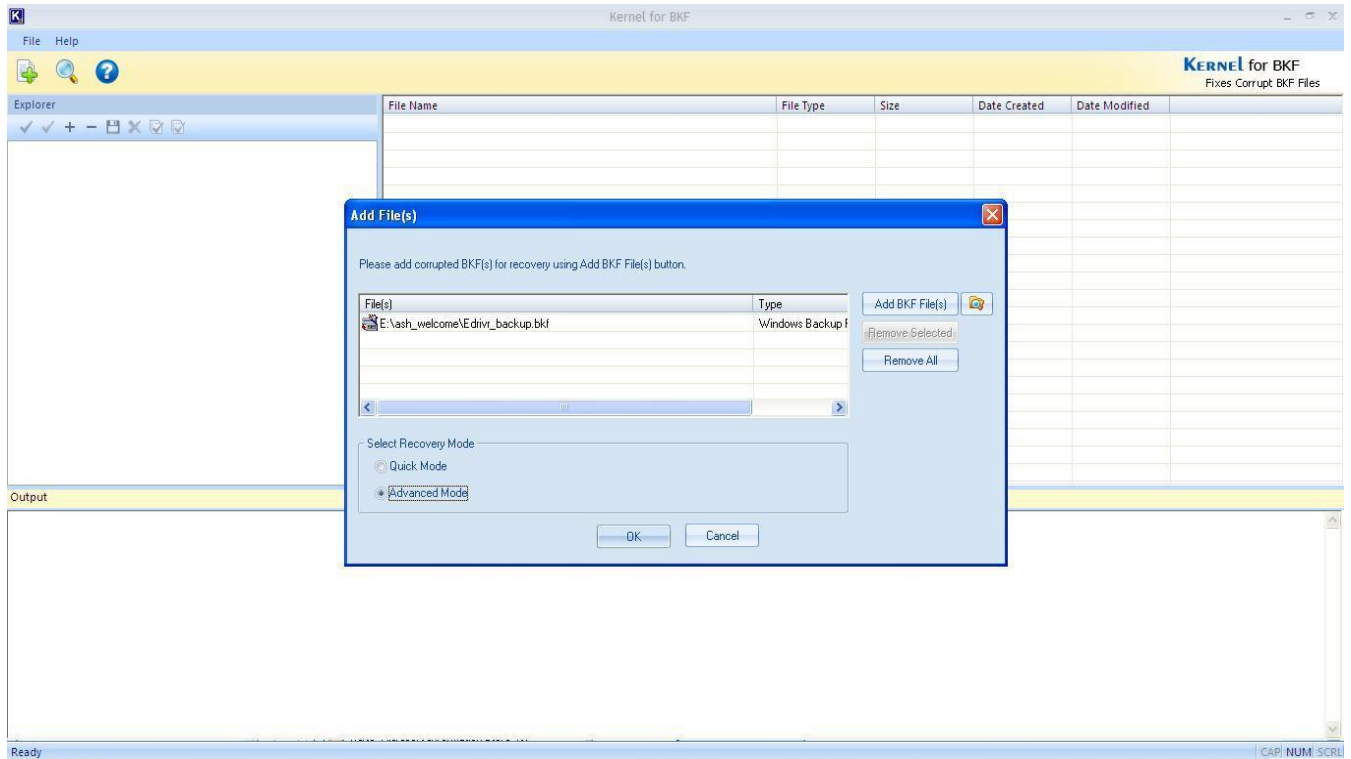


Figure 4.3: Selecting the Recovery Mode

As you click on the **OK** button, software scans the corrupt BKF file and displays entire recovered data in the Interface. Left pane displays all the Folder hierarchy within BKF while Right Pane displays all the files lying within those folders. The bottom pane of the software displays list of all the files in the BKF without any Folder structure.

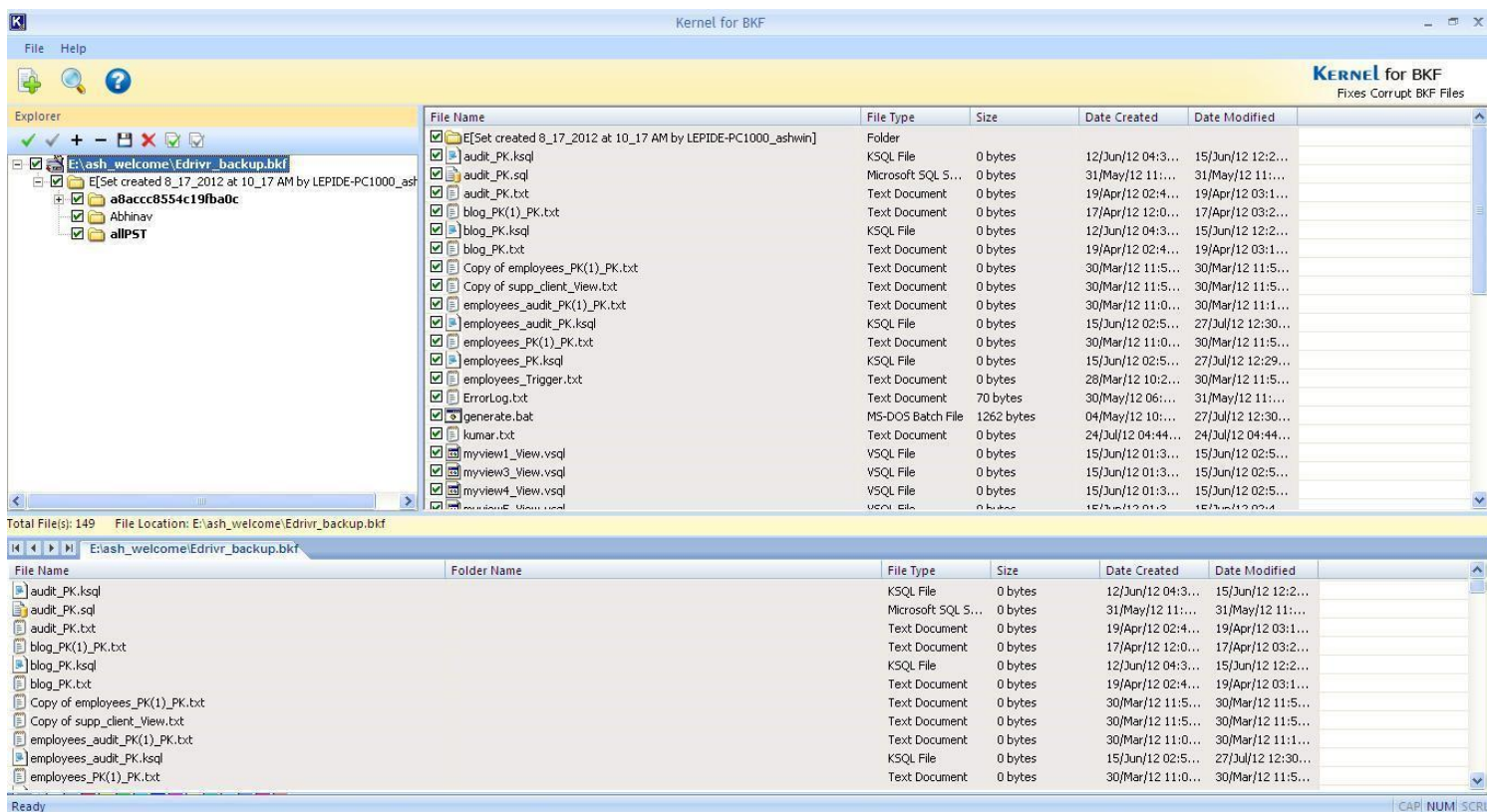


Figure 4.4: Displaying entire recovered data from BKF file

Note: Apart from the above procedure, you can add any number of BKF files and recover by simply dragging them into the software interface.

4.2 Search BKF Files

Kernel for BKF also allows you to search for any particular BKF file. You need to provide location of Drive or particular folder and the software will search and list all BKF files located in that drive or folder. You need to execute the following steps to search BKF files:

1. Click on the **Search** option on the Tool bar. **Search File(s)** dialog box opens up.

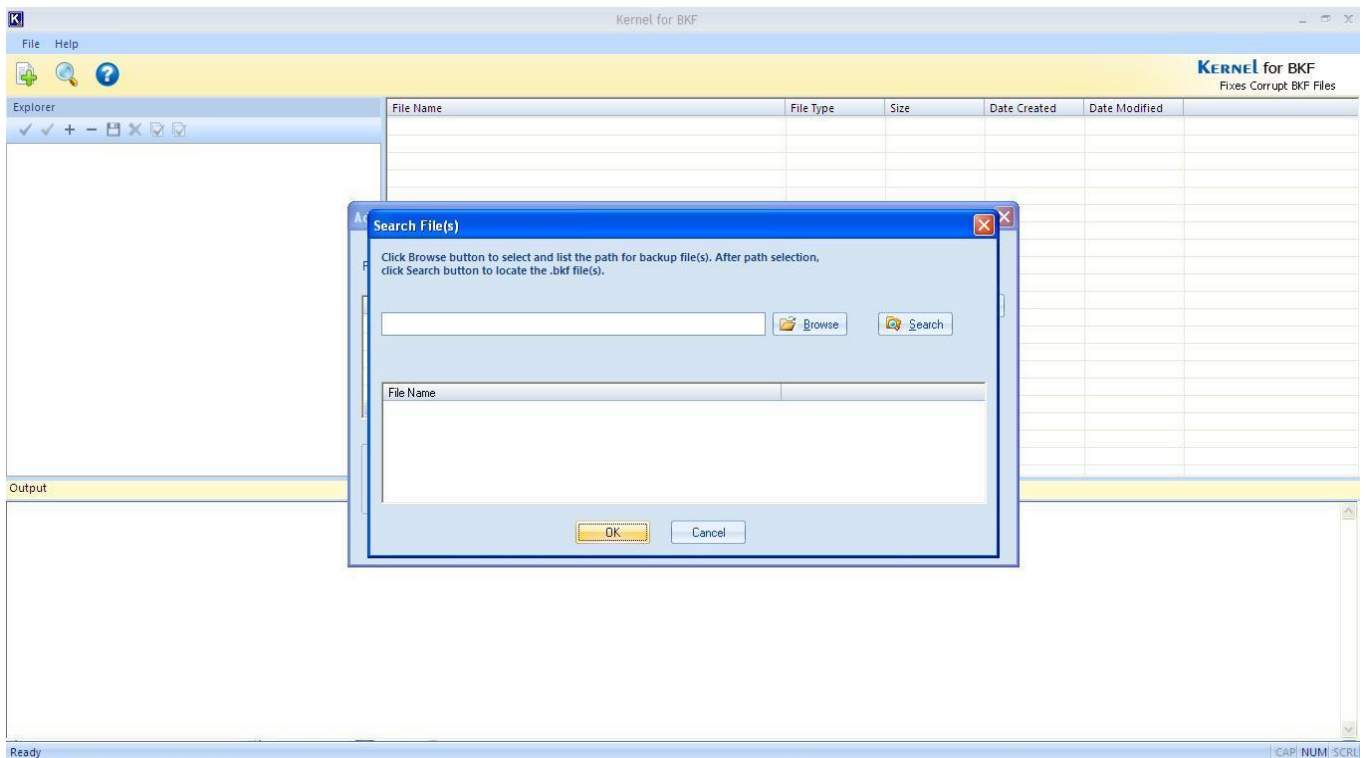


Figure 4.5: Searching for a BKF File

2. Click **Browse** button to select the Drive or Folder location that contains BKF file. After selecting the drive, click on **Search** Button. All the BKF files found in the given location will get enlisted.

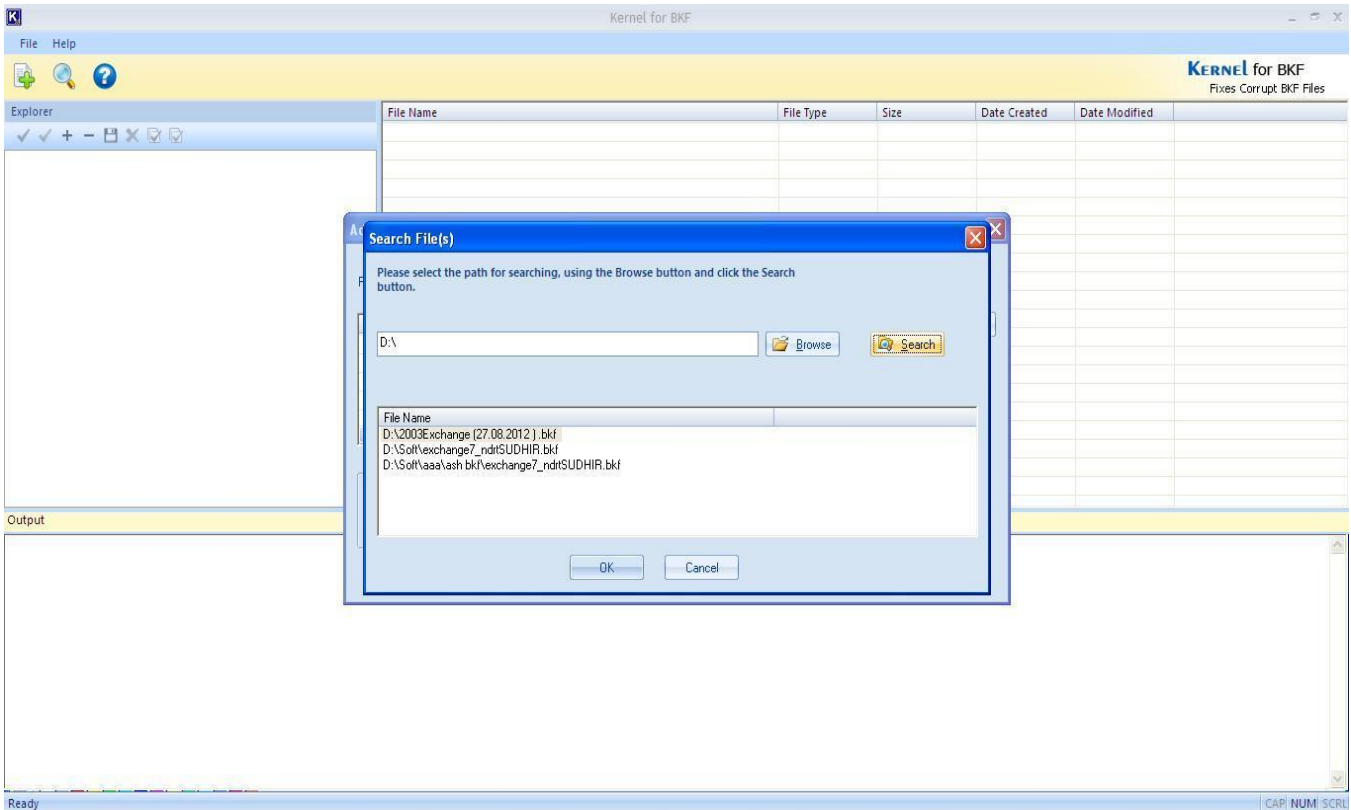



Figure 4.6: Searched BKF Files

3. Select the BKF file from the list and click **OK** button to recover.

 **Note:** You can select multiple BKF files from the list.

4.3 Save BKF Files

Once the data from the corrupt BKF has been recovered you can save it to the desired location. You can save the entire content of the BKF or individual files and folders as per requirement. You need to execute the following steps to save data from BKF files:

1. Mark the checkbox against the folder that you intend to save. If you intend to save the entire BKF, mark the checkbox against it in the left pane.
2. Right-click on the item and select **Save to Disk** option from the popup menu. You can also click the **Save** button on the Tool Bar.

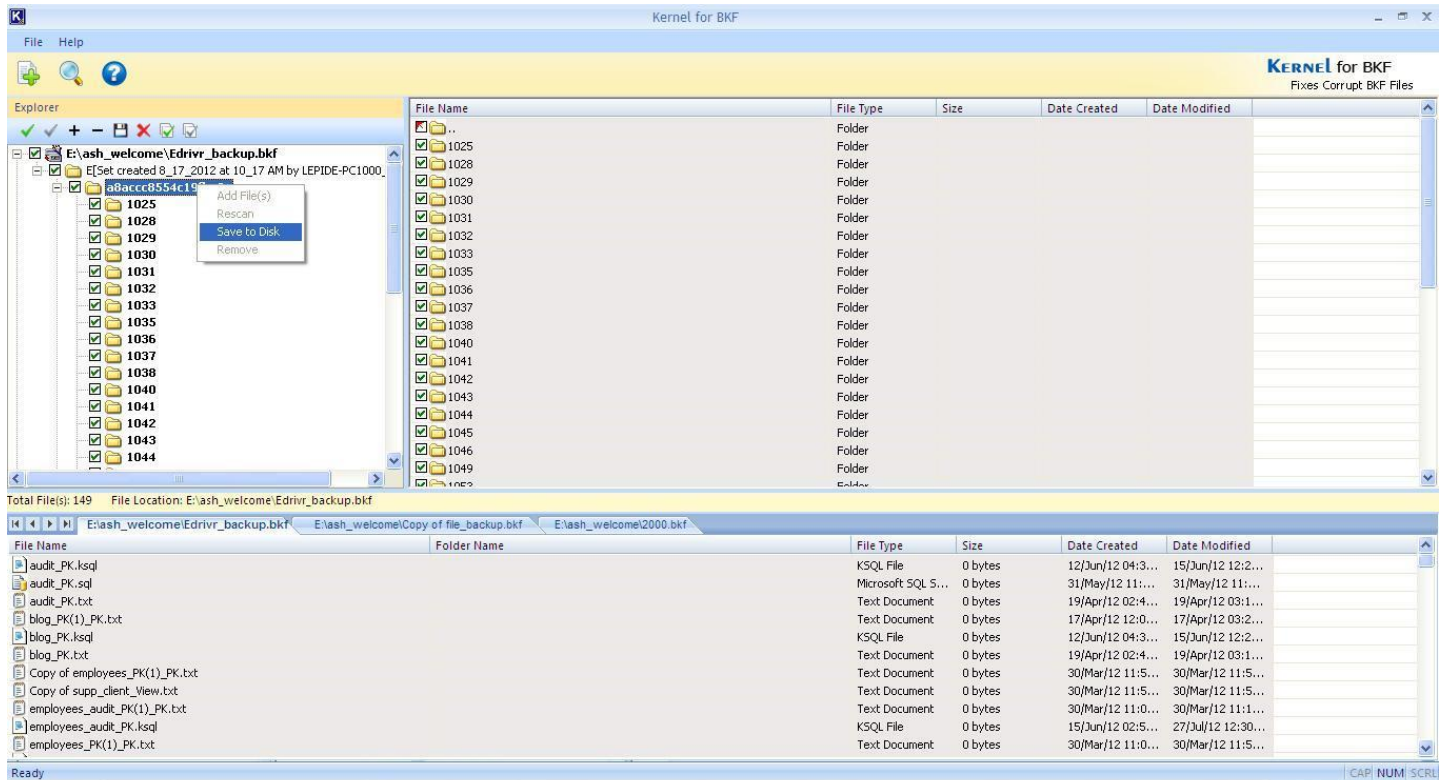


Figure 4.7: Saving the BKF File

If you intend to save a particular file then mark the checkbox against it in the right pane.

3. Right-click on the selected item and click **Save Checked File(s)** option.

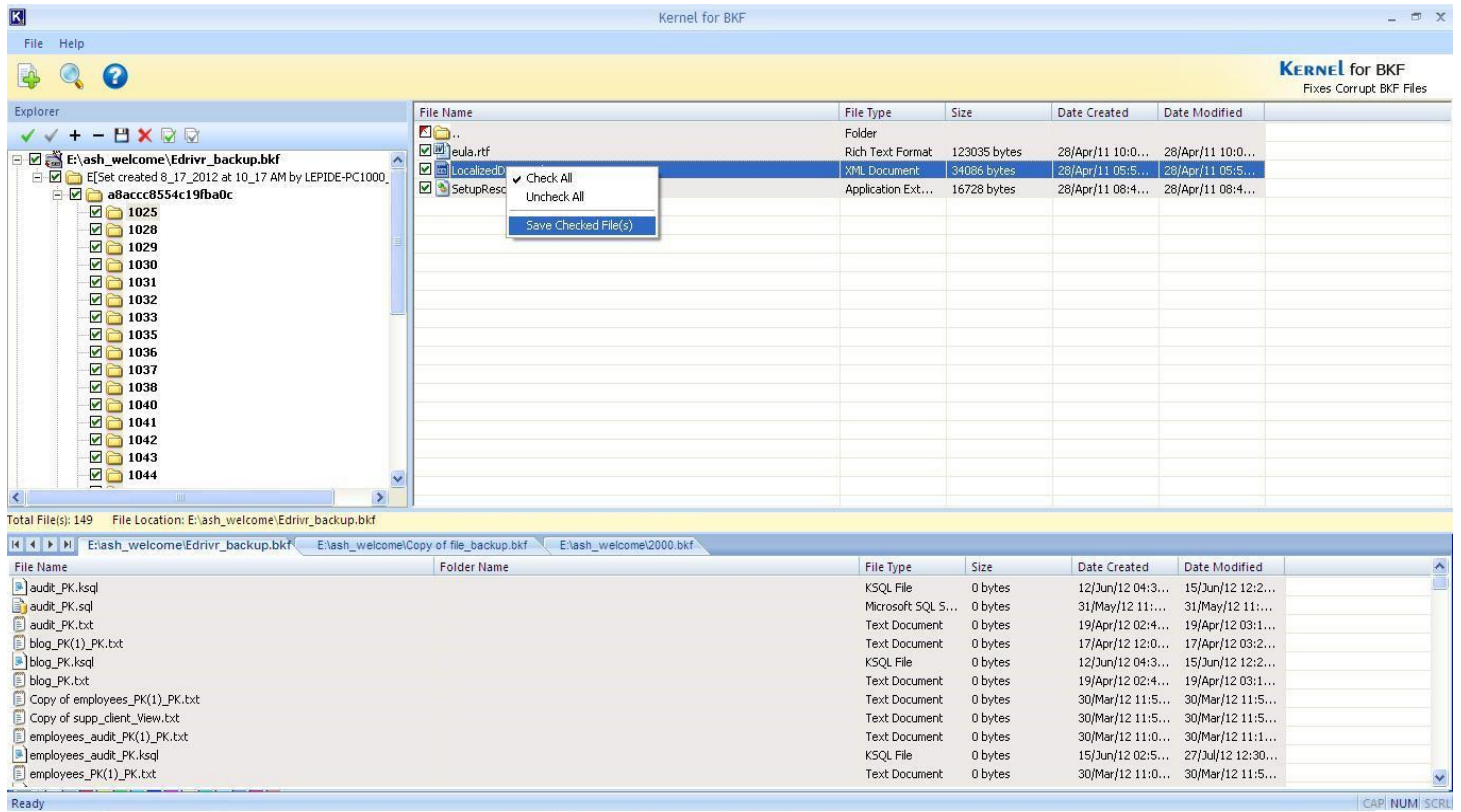


Figure 4.8: Saving Selected Items

Select Destination Path popup opens up.

4. Browse the destination path.

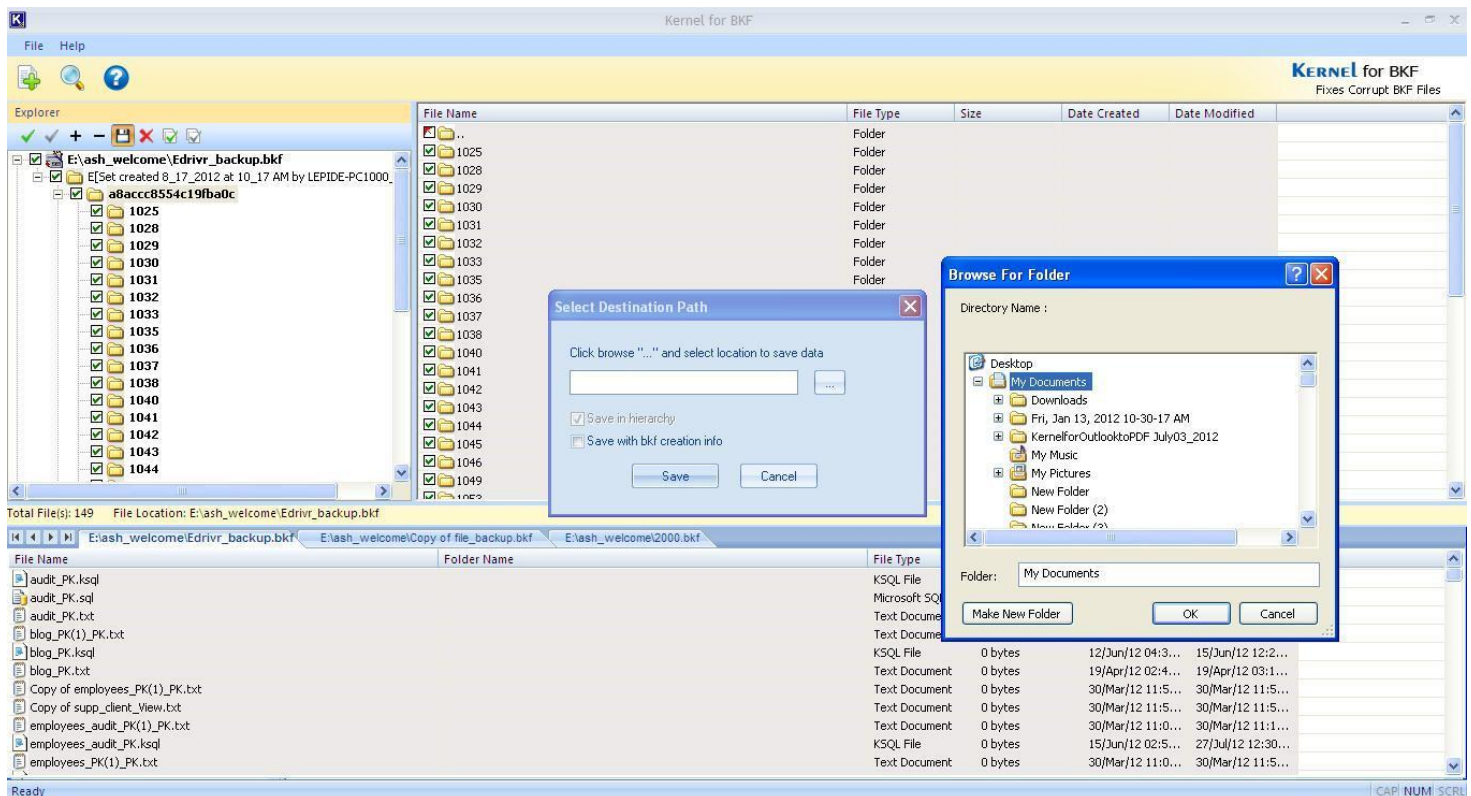


Figure 4.9: Providing destination to save the selected items

Here, you get two options to select:

Save in hierarchy: This saves the recovered file as per complete hierarchy.

Save with BKF creation Info: This creates a NUCBKF file at the destination. This contains the BKF creation info.

5. Click **Save** to start the saving process. Finally, the Saving location along with the **Start Time** and **End Time** is displayed in a popup. Click **OK** to complete the process.

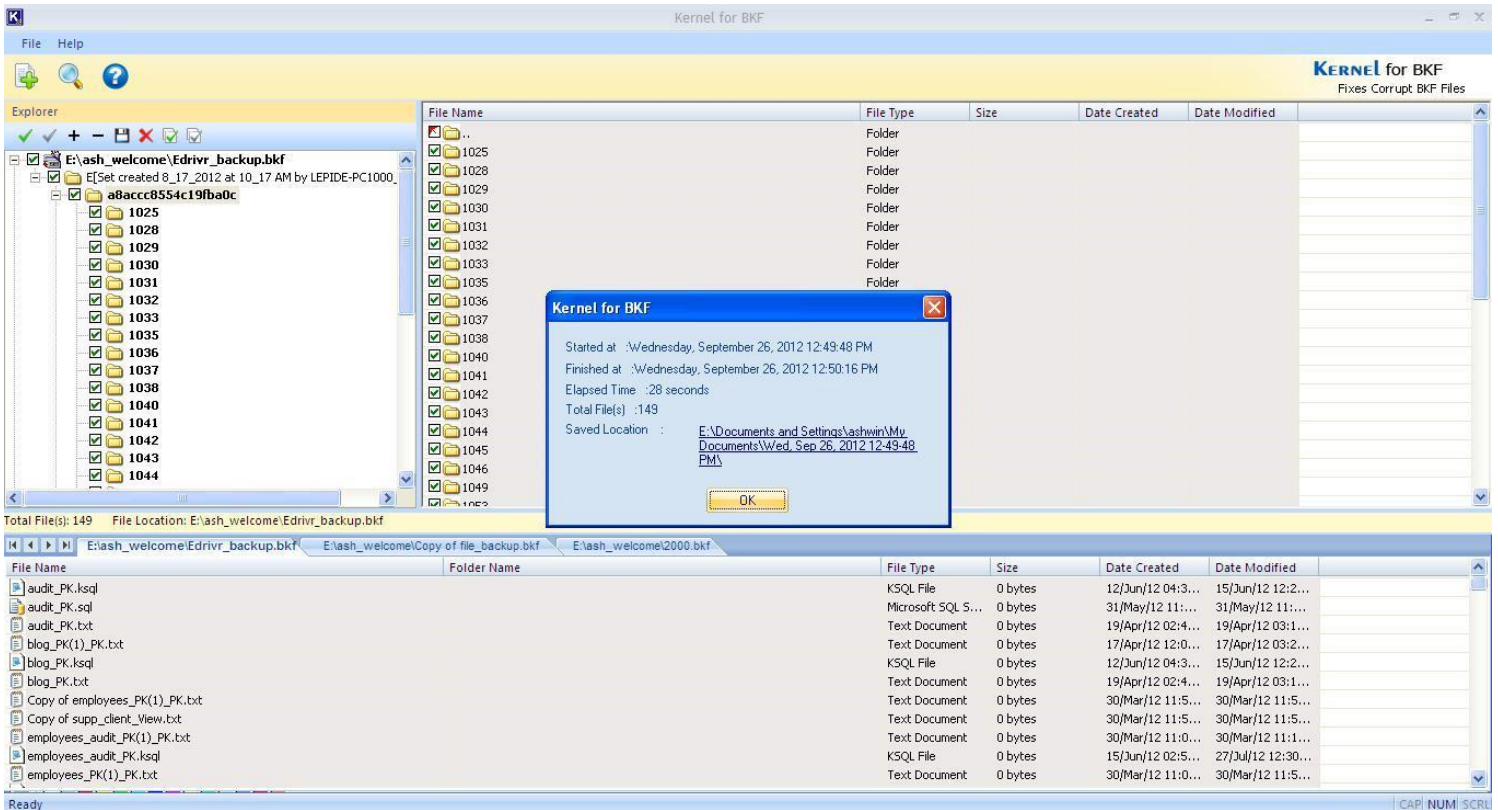


Figure 4.10: Successful saving of BKF file data

You can view the saved data by clicking the link.

Log Generation

When the software fails to save the recovered BKF file at the specified location, it generates a log file and displays a dialog box containing error message.



Figure 4.11: Error message generated when the software fails to save the recovered BKF file at specified location

1. Click **OK** to view the Log details.

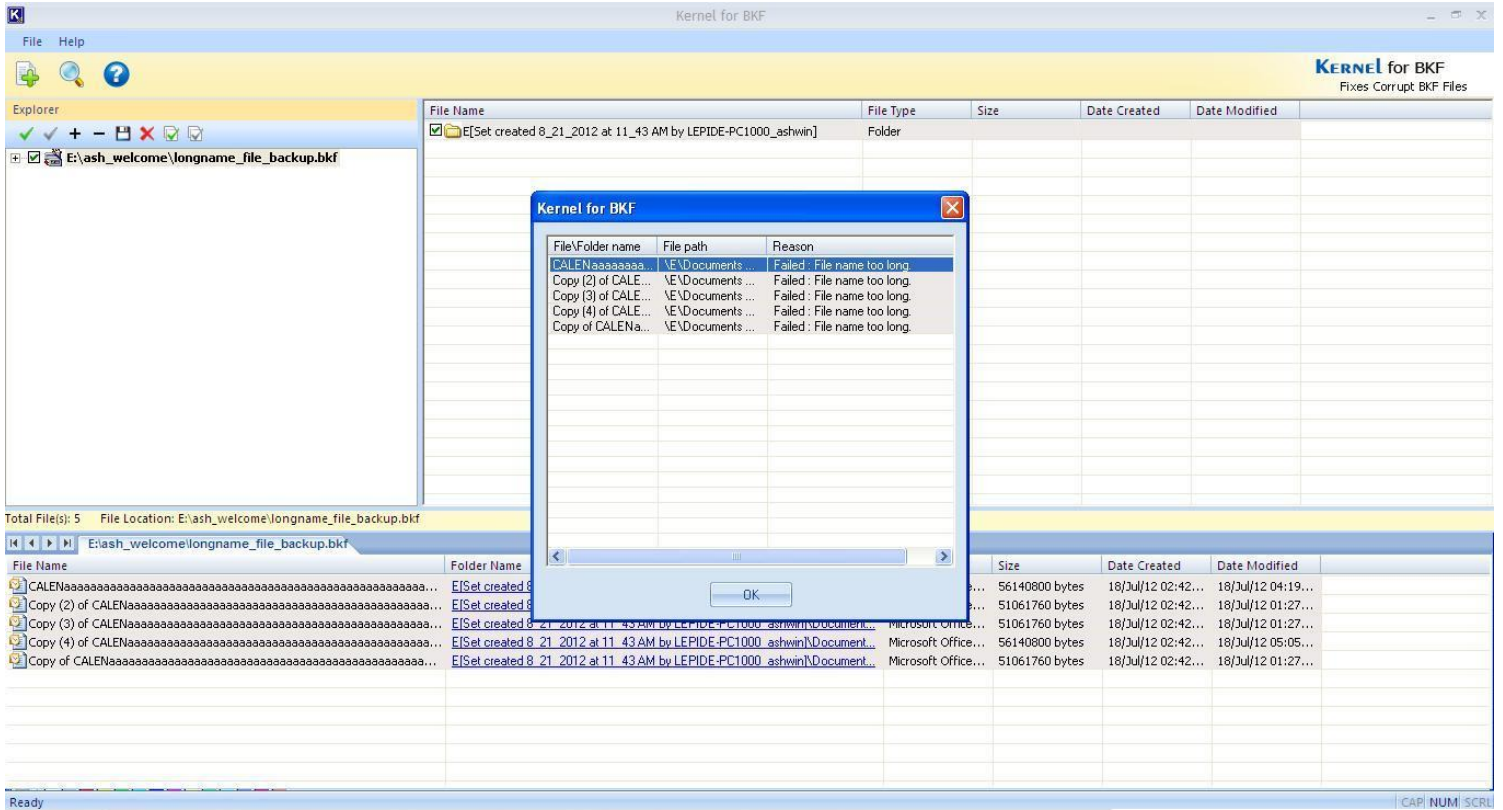


Figure 4.12: Generated Log File on unsuccessful saving

2. Click **OK** to close the Log window. You can try to save the individual items by marking their checkbox and selecting **Save Checked File(s)** option.

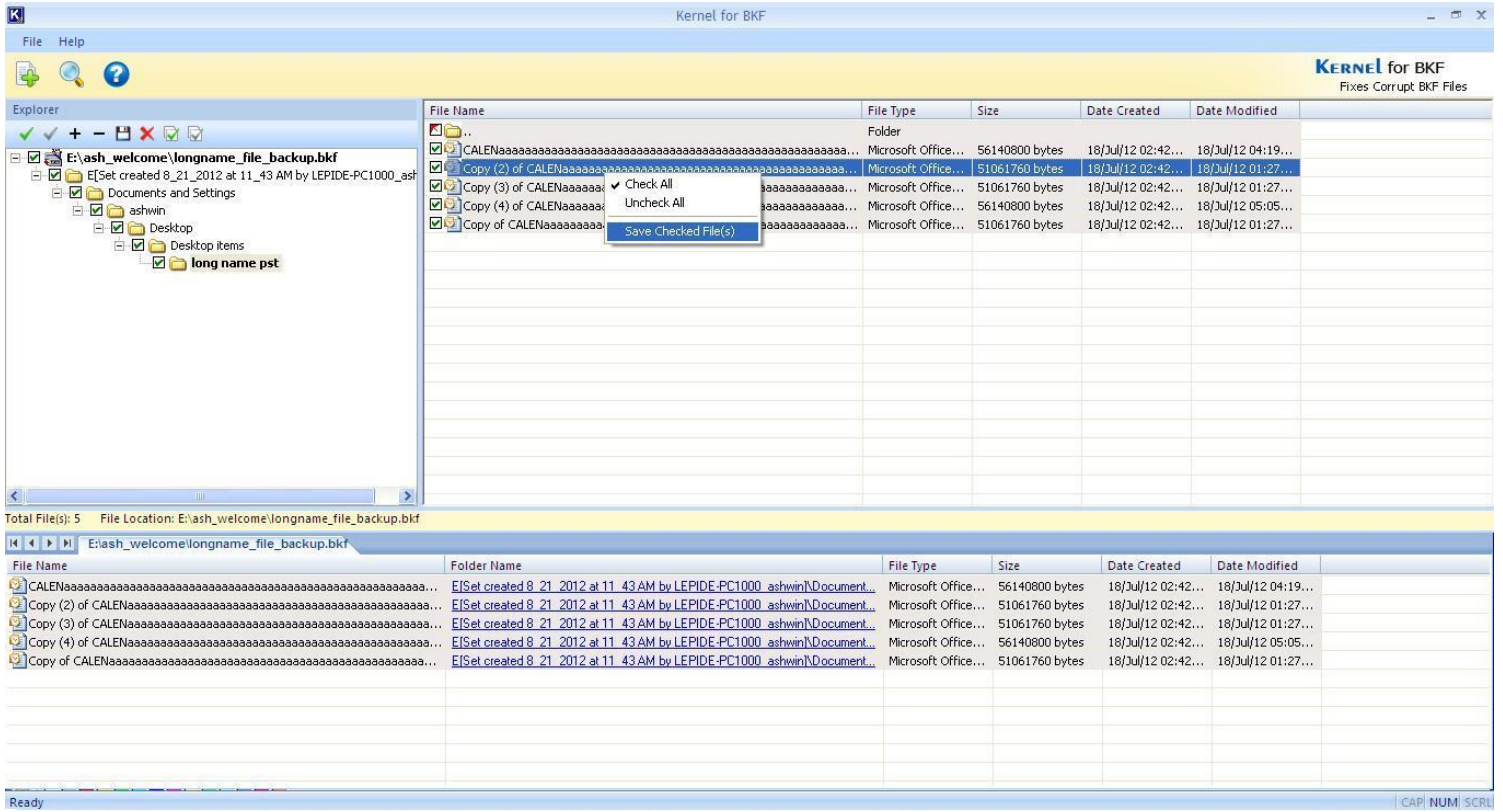


Figure 4.13: Saving Individual Items

5. Download Purchase and Register

5.1 Free Trial Download

The trial version of Kernel for BKF is also available, with which you can evaluate and analyze the capabilities of the software. Free version of Kernel for BKF works similar to the full version i.e. can effectively recover BKF data. However, the free trial version of Kernel for BKF comes with a limitation that it does not allow saving the recovered data; you can only see the preview. To overcome this limitation you need to purchase the full version.

Free version of Kernel for BKF can be downloaded from our website:

<https://www.nucleustechnologies.com/Download-BKF-File-Repair-Software.php>

5.2 Purchase & Register

You must purchase Full version of Kernel for BKF software in order to accurately and completely recover BKF files. The FREE trial version of Kernel for BKF is efficient to recover BKF but it has some limitations.

You can purchase the software through our website:

<https://www.nucleustechnologies.com/Buy-BKF-File-Repair-Software.php> (encrypted and secure site).

Payment and Delivery

Purchase the Kernel for BKF software from our authorized resellers, which provide number of payment options for your ease - Paypal, FAX, Credit Card, E-cheque, Pay Order, etc.

After making the purchase transaction with our resellers, an email is sent consisting of activation details and download link of the Full version comprising of the activation code. This email is sent to the email address, which you have used while processing the purchase transaction with our resellers.

We suggest you not to use false e-mail address while making the purchase transaction.

For any other details related to purchase process, software activation process, email us at: sales@nucleustechnologies.com

5.3 Support

KernelApps Pvt. Ltd. provides round-the-clock technical support for its product range to solve technical and software queries. The software comes with an embedded help manual that can be accessed by clicking **Help** in the software main window. You can also press the **F1** key on the keyboard of your computer to access the embedded help manual of Kernel for BKF.

Telephone Support:

+91-9818725861

1-866-348-7872 (Toll Free for USA/CANADA)

Email Support:



sales@nucleustechnologies.com for Sales

support@nucleustechnologies.com for Support

contact@nucleustechnologies.com for General Queries

6. Troubleshooting

6.1 Common Issues

What are the limitations in trial version of Kernel for BKF?

The free demo version of Kernel for BKF works almost same as that of the full version of the software but with a limitation that it does not allow saving the recovered data.

6.2 Frequently Asked Questions

1. How to purchase Kernel for BKF?

One can buy Kernel for BKF from our website:

<https://www.nucleustechnologies.com/Buy-BKF-File-Repair-Software.php>

2. I have lost my full version for Kernel for BKF. Can you help me?

Please email us at sales@nucleustechnologies.com. Please include your name, address, email address, and order confirmation number (if you have it). We will be happy to help you.

3. What are the two recovery modes in Kernel for BKF?

The two recovery modes in Kernel for BKF are Quick Mode, and Advanced Mode.

4. What are the supported Windows OS Platforms for Kernel for BKF?

The supported Windows OS Platforms for Kernel for BKF are: Windows 8, Windows 7, Windows Vista, Windows XP, Windows 2003, Windows 2000, Windows NT, Windows 98, and Windows 95.

5. What are the various reasons for corruption of BKF files?

BKF files may get corrupt or damaged due to a number of unseen reasons such as Backup interruptions, CRC (cyclic redundancy check) errors, Virus Corruptions, Unexpected system shutdown, Errors due to Unrecognized Media, etc.

6. Give the link for downloading the free trial version of Kernel for BKF.

The free trial version of Kernel for BKF can be downloaded using the link:

<https://www.nucleustechnologies.com/Download-BKF-File-Repair-Software.php>



7. Legal Notices

This section comprises the legal specification about Kernel for BKF and the company KernelApps Private Limited.

7.1 Copyright Notice

KernelApps Private Limited, Kernel for BKF, accompanied user manual, and documentation are copyright of KernelApps, with all rights reserved. Under the copyright laws, this user manual cannot be reproduced in any form without the prior written permission of KernelApps. No Patent Liability is assumed, however, with respect to the use of the information contained herein.

© KernelApps PVT LTD. All rights reserved.

7.2 Trademarks

Kernel for BKF® is a copyright work of KernelApps Private Limited.

Windows 95®, Windows 98®, Windows ME®, Windows NT®, Windows 2000®, Windows 2003®, Windows XP®, Windows Vista®, Windows 7®, and Windows 8® are registered trademarks of Microsoft Corporation.

All other brand and product names are trademarks or registered trademarks of their respective companies.

7.3 Disclaimer

The information contained in this manual, including but not limited to any product specifications, is subject to change without notice. KernelApps Private Limited provides no warranty with regard to this manual or any other information contained herein and hereby expressly disclaims any implied warranties of merchantability or fitness for any particular purpose with regard to any of the foregoing. KernelApps Private Limited assumes no liability for any damages incurred directly or indirectly from any technical or typographical errors or omissions contained herein or for discrepancies between the product and the manual.

In no event shall KernelApps Private Limited be liable for any incidental, consequential special or exemplary damages, whether based on tort, contract or otherwise, arising out of or in connection with this manual or any other information contained herein or the use thereof.

7.4 License Agreement

Kernel for BKF © by KernelApps Private Limited.

Your Agreement to this License



You should carefully read the following terms and conditions before using, installing, or distributing this software, unless you have a different license agreement signed by KernelApps Pvt. Ltd. The terms and conditions of this License describe the permitted use and users of each Licensed Copy of Kernel for BKF. For purposes of this License, if you have a valid license, you have the right to use a single Licensed Copy of KernelApps.

Scope of License

Each Licensed Copy of Kernel for BKF may either be used by a single person or used non-simultaneously by multiple people who use the software personally installed on a single workstation. All rights of any kind in the KernelApps, which are not expressly granted in this License, are entirely and exclusively reserved to by KernelApps. You may not rent, lease, modify, translate, reverse engineer, decompile, disassemble, or create derivative works based on, KernelApps, nor permit anyone else to do so. You may make access to KernelApps available to others in connection with a service bureau, application provider, or similar business, nor permit anyone else to do so.

Warranty Disclaimers and Liability Limitations

Kernel for BKF, and any and all accompanying software, files, data and materials, are distributed and provided as is and with no warranties of any kind, whether expressed or implied. In particular, there is no warranty for the quality of data recovered. You acknowledge that good data processing procedure dictates that any program, including Kernel for BKF, must be thoroughly tested with non-critical data before there is any reliance on it, and you hereby assume the entire risk of all use of the copies of Kernel for BKF covered by this License. This disclaimer of warranty constitutes an essential part of this License. In addition, in no event does KernelApps authorize you or anyone else to use Kernel for BKF in applications or systems where Kernel for BKF Failure to perform can reasonably be expected to result in a significant physical injury, or in loss of life. Any such use is entirely at your own risk, and you agree to hold KernelApps harmless from any and all claims or losses relating to such unauthorized use.

General

This License is the complete statement of the agreement between the parties on the subject matter, and merges and supersedes all other or prior understandings, purchase orders, agreements, and arrangements. This License shall be governed by the laws of the State of Delhi. Exclusive jurisdiction and venue for all matters relating to this License shall be in courts and for a located in the State of Delhi, and you consent to such jurisdiction and venue. There are no third party beneficiaries of any promises, obligations, or representations made by KernelApps herein. Any waiver by KernelApps of any violation of this License by you shall not constitute, nor contribute to, a waiver by KernelApps of any other or future violation of the same provision, or any other provision, of this License.