

Kernel for Excel Repair

User Guide

Version 18.10

Contents

1.	Introduction to Kernel for Excel Repair	3
1.1	Using this Manual	3
1.2	About Kernel Excel Repair	3
1.3	Salient Features	4
2.	Getting Started	5
2.1	Installation Pre-requisites	5
2.1.1	Hardware Requirements:	5
2.1.2	Software Requirements:	5
2.2	Downloading Kernel Excel Repair for the First Time	5
2.3	Install Kernel Excel Repair	6
2.4	Start Kernel Excel Repair	6
2.5	Uninstall Kernel Excel Repair.....	6
3.	Software Interface	7
3.1	Menu bar	7
3.1.1	File Menu	7
3.1.2	Tool Menu.....	8
3.1.3	View Menu.....	9
3.1.4	Help Menu	10
3.2	Toolbar.....	11
3.2.1	Buttons Used.....	12
4.	Using Kernel Excel Repair Software	13
4.1	Repairing Single .XLS File.....	13
4.2	Repairing Multiple .XLS File.....	16
5.	Conclusion.....	19
6.	Support	19
7.	Copyright	19

1. Introduction to Kernel for Excel Repair

Welcome to the user manual of Kernel for Excel, the most effective and convenient .xls file repair tool available that repairs corrupt MS Excel worksheets. This user manual comprises step by step guidelines on using Kernel for Excel.

1.1 Using this Manual

This user manual is intended to guide users on using Kernel for Excel Repair software. We suggest that first time users should read this user manual completely and carefully before proceeding to use the software. However, if you are an experienced user, you can use the Table of Contents to find out information about the tasks that you need to perform while using Kernel for Excel Repair software.

You can use the Table of Contents to navigate through different sections of this user manual. The Table of Contents enlists all the sections contained within this user manual in chronological order. This user manual comprises following sections

- Introduction
- Getting Started
- Software Interface
- Using Kernel Excel Repair
- Full Version
- Support
- Troubleshooting
- Legal Notice

1.2 About Kernel Excel Repair

Kernel for Excel Repair is a file repair and data recovery software for MS Excel worksheets or spreadsheets. This software repairs MS Excel worksheets that become inaccessible due to unexpected system shutdown, power failure, virus attacks, media errors, software crash, etc.

Kernel for Excel Repair offers two repairing modes: Single file and Multi file mode. These two modes are provided to ease the repairing process. Single mode enables the repairing of a single file at a time whereas multi-file mode allows the user to repair a batch of corrupt .xls files in one cycle. You might be familiar with the following error messages if you have encountered MS Excel worksheet file corruption before:

- “Cannot access read-only document???.xls”
- “???.xls; File format is not valid.”
- “Access denied.”

- “Excel cannot open the file.”

Kernel for Excel Repair quickly and effectively resolves the above-mentioned errors by repairing corrupt .XLS keeping the complete document format intact. It restores formatting, Unicode character, headers, footers, hyperlinks, OLE objects, data structures, formulas and other existing component of the corrupt MS Excel worksheet.

1.3 Salient Features

Salient features of Kernel Excel Repair include:

- Efficient embedded repair algorithms to quickly repair even heavy files
- Support for almost all version of MS Excel including Excel 2019
- User-friendly graphical user interface
- Supports UNICODE in file content and file name
- Uses Live Preview technology to view the recovered data from the corrupt .XLS file before saving
- Support for batch repair of .xls files
- Compatible with all versions of Windows operating system, including Windows 10
- Free demo to analyze the features and functions of the tool before purchasing it

2. Getting Started

Now that you have understood the features and potential of Kernel Excel Repair, you are ready to get a hand on experience of the software. To start repairing .xls files, you will first need to download and install this software. However it is strongly recommended that before installing Kernel for Excel, you should go through the installation pre-requisites for the software to ensure that your computer is appropriately configured to run the software.

2.1 Installation Pre-requisites

Following are the basic system pre-requisites for installing and running Kernel for Excel, which can be broadly classified into two major categories – Hardware requirements and Software requirements.

2.1.1 Hardware Requirements:

The hardware requirements for installing the software are as follows:

- Pentium Class Processor
- 64 MB RAM (128 MB Recommended)
- 10 MB for Software installation
- Disk Space - Enough space to save the results

2.1.2 Software Requirements:


Supported MS Windows Operating System (Both 32-bit and 64-bit): Windows 10, Windows 8.1, Windows 8, Windows 7, Windows XP, Windows Vista, Windows Server 2000, Windows Server 2003, Windows Server 2008, Windows Server 2008 R2, Windows Server 2012, Windows Server 2012 R2, and Windows Server 2016.

Supported MS Excel Requirements: MS Excel 2019, MS Excel 2016, MS Excel 2013, MS Excel 2010, MS Excel 2007, MS Excel 2003, MS Excel XP, MS Excel 2000, MS Excel 97, MS Excel 95

2.2 Downloading Kernel Excel Repair for the First Time

After checking your computer with the prescribed system requirements for Kernel Excel Repair, you can download the evaluation version of the software on your computer using the following link:

<https://www.nucleustechologies.com/repair-excel-file.php>:

 The free trial version of Kernel Excel Repair allows you to repair .xls files available on your system. However, the repaired file will display the preview of the recovered data but doesn't allow you to save the repaired file until you purchase the full version of the software.

2.3 Install Kernel Excel Repair

To install Kernel for Excel Repair onto your computer system, perform the following steps:

1. First, make sure that the host computer meets the entire basic system requirements and has sufficient memory available.
2. Download Kernel for Excel Repair from the website:
<https://www.nucleustechnologies.com/repair-excel-file.php>:
3. Double-click Kernel for Excel Repair Software Installer .exe file.
4. Follow the on-screen instructions. The **setup installation completion** screen will be displayed.
5. Click **Finish**, the main window of Kernel for Excel Repair will be launched.

2.4 Start Kernel Excel Repair

To start Kernel for Excel Repair software:

- Click **Start > All Programs > Kernel Excel Repair**

Alternatively, you can launch Kernel Excel Repair by double-clicking the shortcut icon available on the desktop and Quick Launch icon.


2.5 Uninstall Kernel Excel Repair

You may need to uninstall and re-install Kernel Excel Repair. To uninstall Kernel for Excel Repair software,

1. Click **Start > All Programs > Kernel Excel Repair > Uninstall Kernel Excel Repair**

A warning message will be displayed.

2. Click **Yes** to uninstall Kernel Excel Repair.

 Before proceeding to uninstall Kernel for Excel Repair, you must ensure that the software is not running.

You can alternatively uninstall Kernel for Excel Repair from the **Control Panel** by performing the following steps:

1. Click **Start > Control Panel** and then double-click **Add or Remove Programs** icon.
2. Select **Kernel Excel Repair** and click **Remove**.
3. A warning message will be displayed. Click **Yes** to uninstall Kernel Excel Repair.

3. Software Interface

Now that Kernel for Excel Repair has been installed on your computer, you can start using the software after getting acquainted with the software interface.

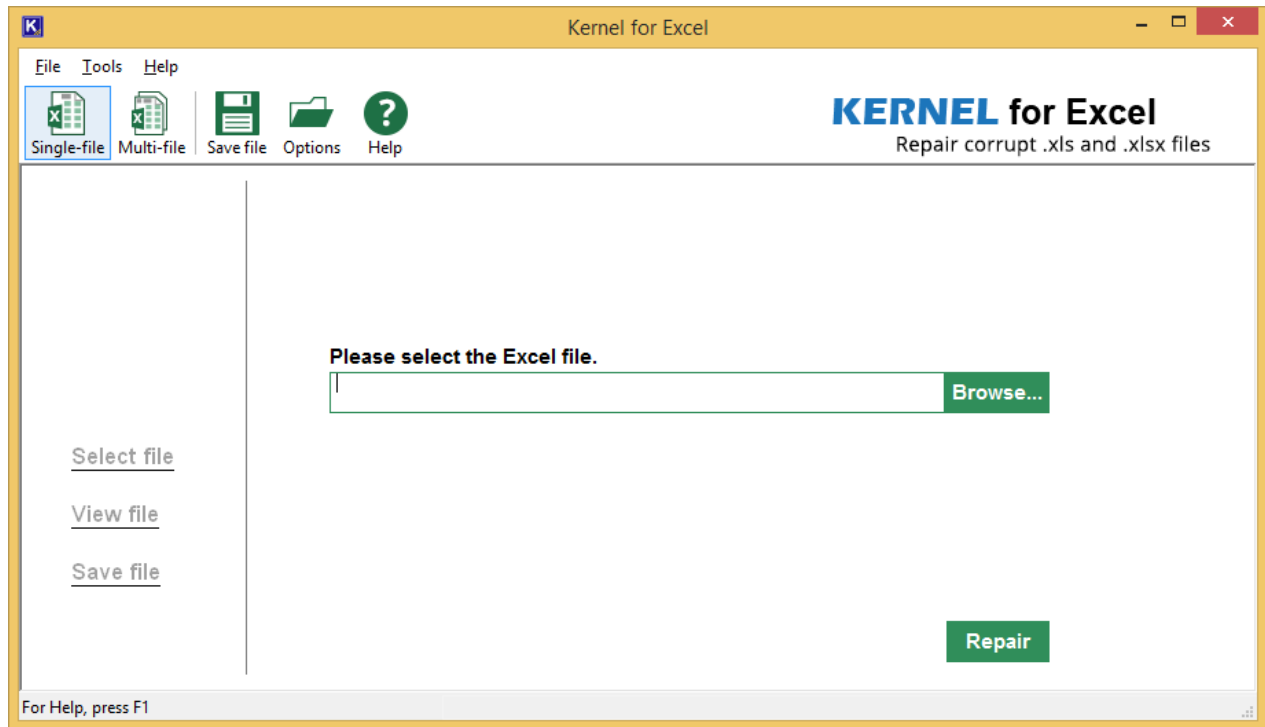


Figure 3.1 Welcome Screen of Kernel for Excel Repair

3.1 Menu bar

The menu bar of Kernel Excel Repair comprises three main menus – File, Tools, and Help.

3.1.1 File Menu

The **File** menu of Kernel Excel Repair appears as:

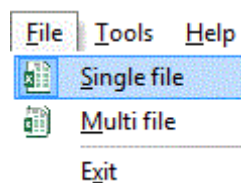


Figure 3.2 File Menu

Menu items in the **File** menu:

Field Name	Field Description
Single File	Select to start the process of recovery after selecting repair single Excel file
Multi File	Select to repair multiple Excel files in one cycle
Exit	Select to close Kernel for Excel Repair software

3.1.2 Tool Menu

The **Tools** menu comprises five menu items.



Figure 3.3 Tools Menu

Menu item in the Tools menu:

Field Name	Field Description
Options	Select to view screen with four options: Start in Single file mode, Start in Multiple file mode, define saving location and Recovered file suffix.
Select	Select to browse and select corrupt .xls file for repairing.
Repair	Select to start the repair process
Preview	Select to view the preview of the repaired file
Save	Select to save the recovered data

3.1.3 View Menu

The View menu compromises single menu item:



Figure 3.4 View Menu

Menu items in the View Menu:

Field Name	Field Description
Theme	Select to change the software theme

3.1.4 Help Menu

The **Help** menu comprises three menu items:

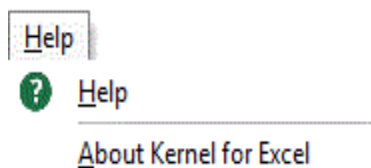


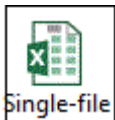


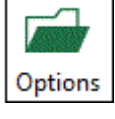

Figure 3.5 Help Menu

Menu items in the **Help** menu:









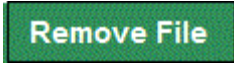

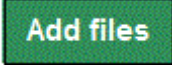
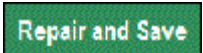
Field Name	Field Description
Help	Select to open User Help Manual of Kernel Excel Repair software
About Kernel Excel Repair	Select to know version and support information about Kernel Excel Repair software

3.2 Toolbar

The toolbar in Kernel for Excel Repair software is displayed below the menu bar. The tool-bar provides a convenient and user- friendly method to perform certain actions that can also be performed by using the menu-bar. Read the information in the table below to find out about the tool-bar buttons:

Button	Button Name	Button Description
 Single-file	Single file	Select this to view screen of Single file recovery mode
 Multi-file	Multi-file	Select this to view screen of Multiple file recovery mode
 Save file	Save file	Select this to save the repaired file
 Options	Option	Select this to view the four options provided in the Kernel for Excel software
 Help	Help	Select this to view help information pertaining to performing various tasks using Kernel for Excel

3.2.1 Buttons Used

Button	Button Description
	Click to apply the settings done in the options screen
	Click to cancel the current operations performed on the screen
	Click to browse for the location
	Click to browse and select the .XLS file that needs to be repaired
	Click to start the process of repairing
	Click to stop the ongoing process
	Click to go back to the previous version
	Click to save the repaired process
	Click to remove selected file from the list
	Click to remove all the files from the list
	Click to add files in case of Multi file mode recovery
	Click to repair and save the repaired file(s)

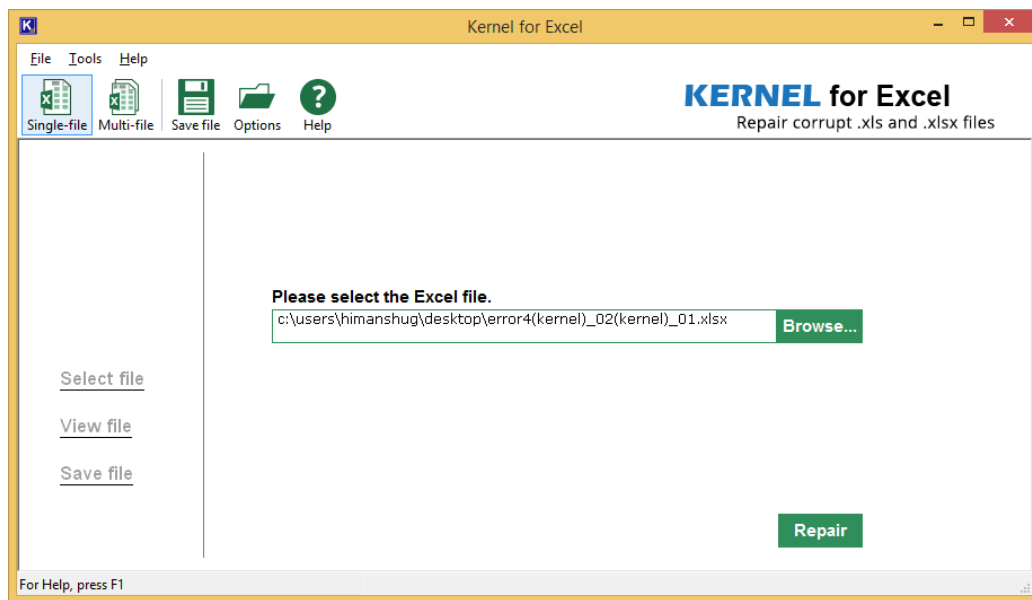
4. Using Kernel Excel Repair Software

Kernel for Excel Repair software offers two ways to recover Excel file – **Single-file** or **Multi-file**.

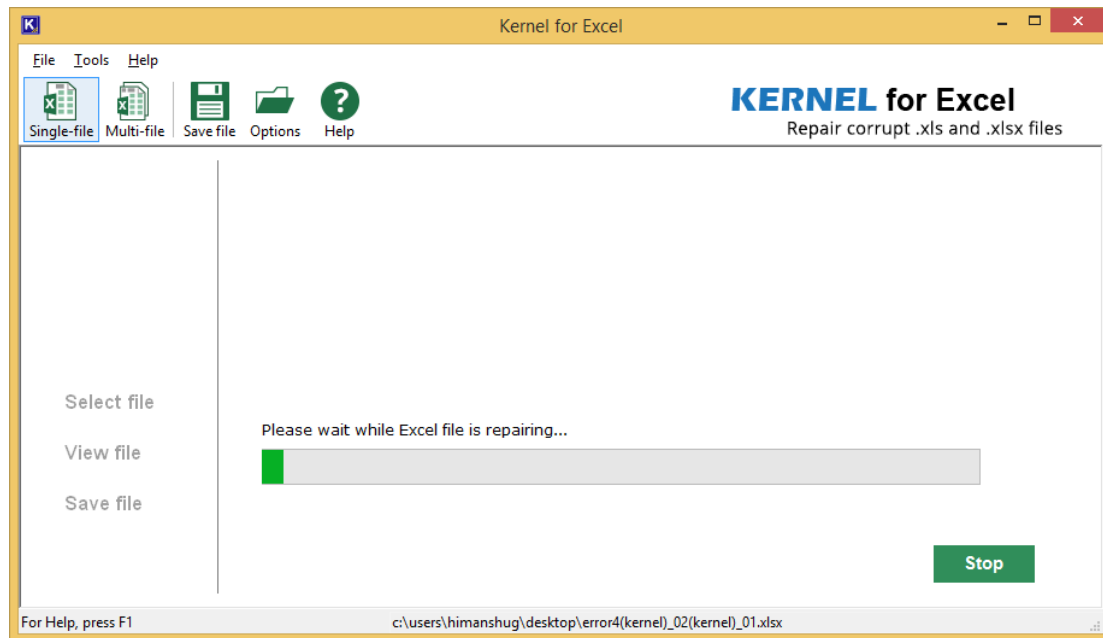
4.1 Repairing Single .XLS File

After getting acquainted with the options provided in the Kernel for Excel software, you are ready to repair single .xls file. To repair single .xls file:

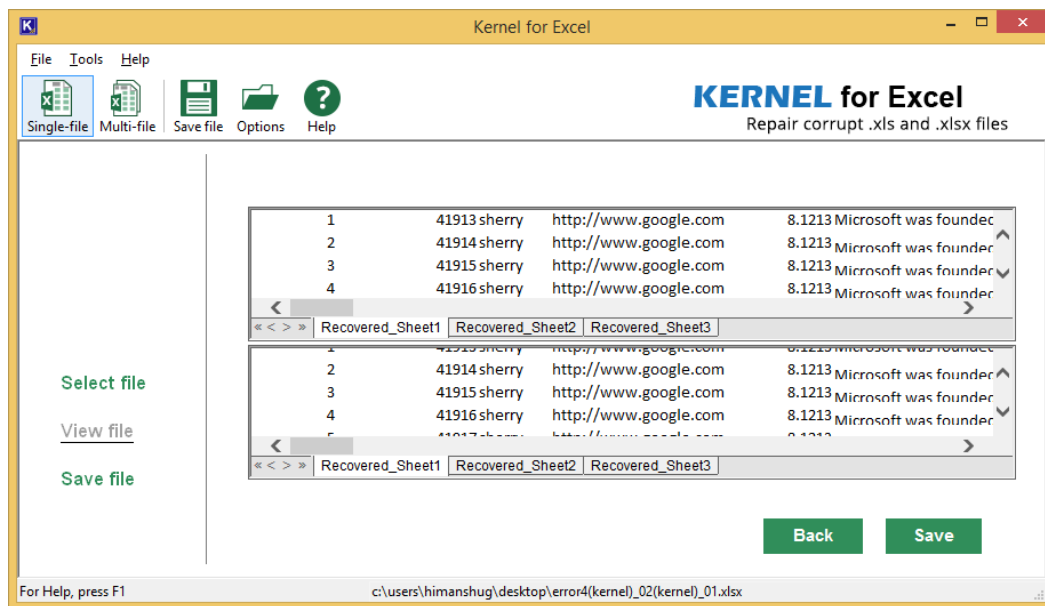
1. Select **Single-file** option from the tool bar and click the **Browse** button to select the corrupt .xls file for repairing. Now, click the **Repair** button to start the repairing and recovery process.



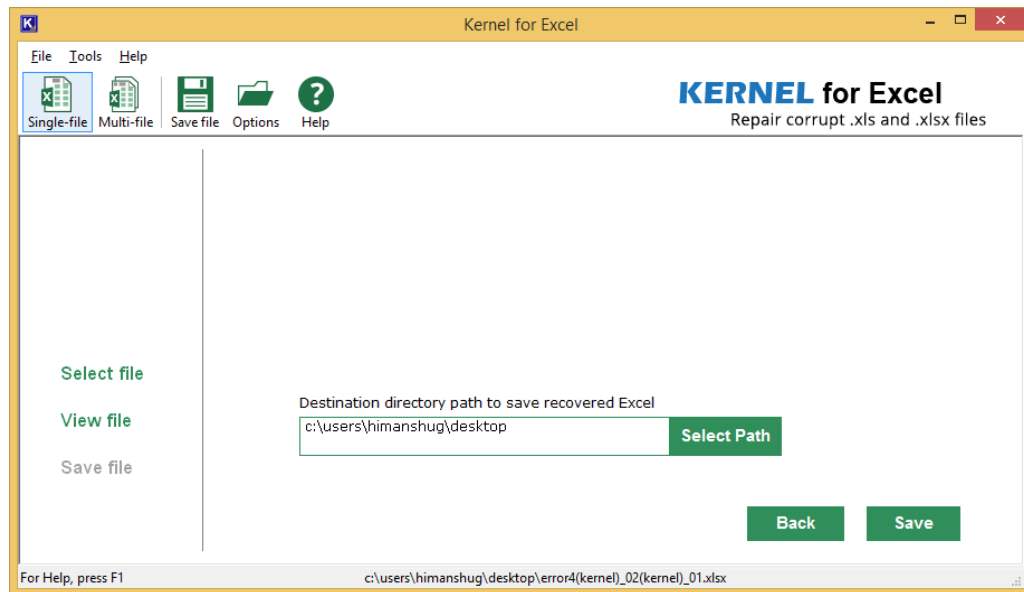
2. As you click the **Repair** button, Kernel for Excel starts the process of repairing corrupt .xls file.



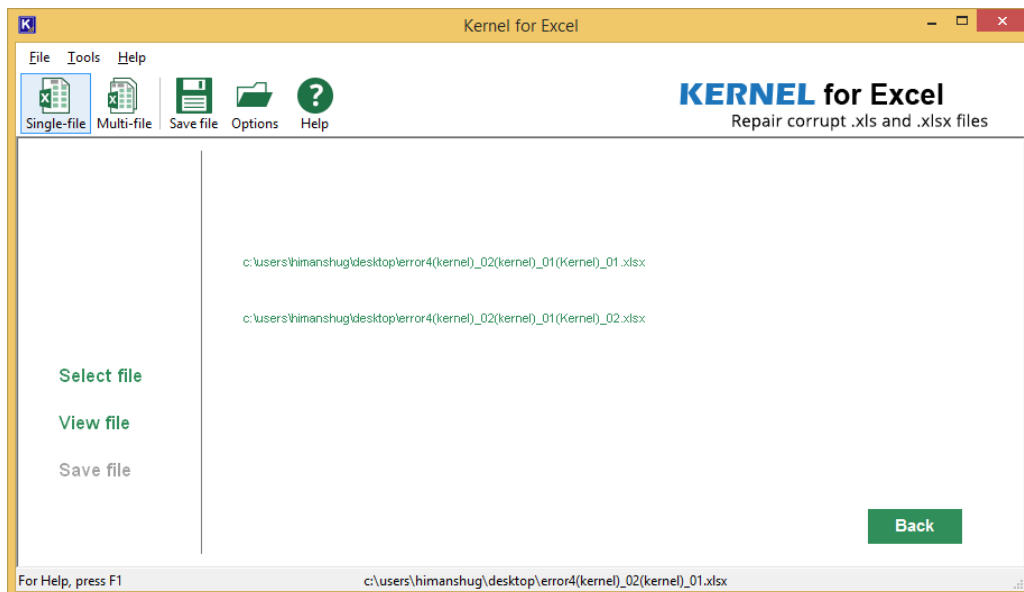
- As soon as the Kernel for Excel finishes the repairing process, it displays the complete preview of the recovered data of the repaired .xls file before saving. Click the **Save** button.



- Now, select the desired location to save the repaired file. Click the **Save** button



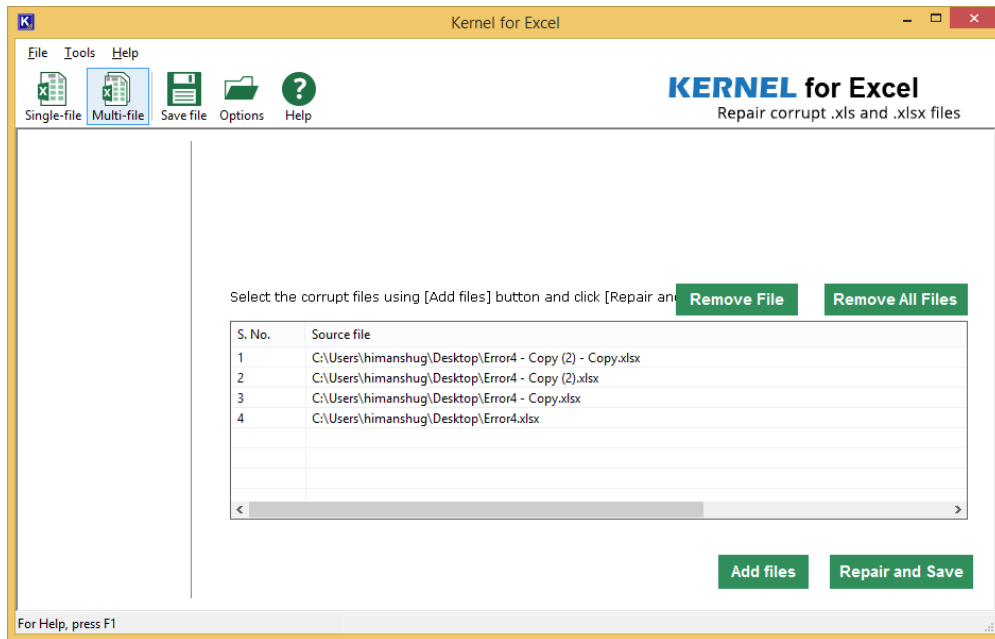
- As soon as the software finishes the saving process, it displays the link that points to the location where the repaired .xls file is saved. Click the link to view the repaired file or open the repaired file from the saved location.




4.2 Repairing Multiple .XLS File

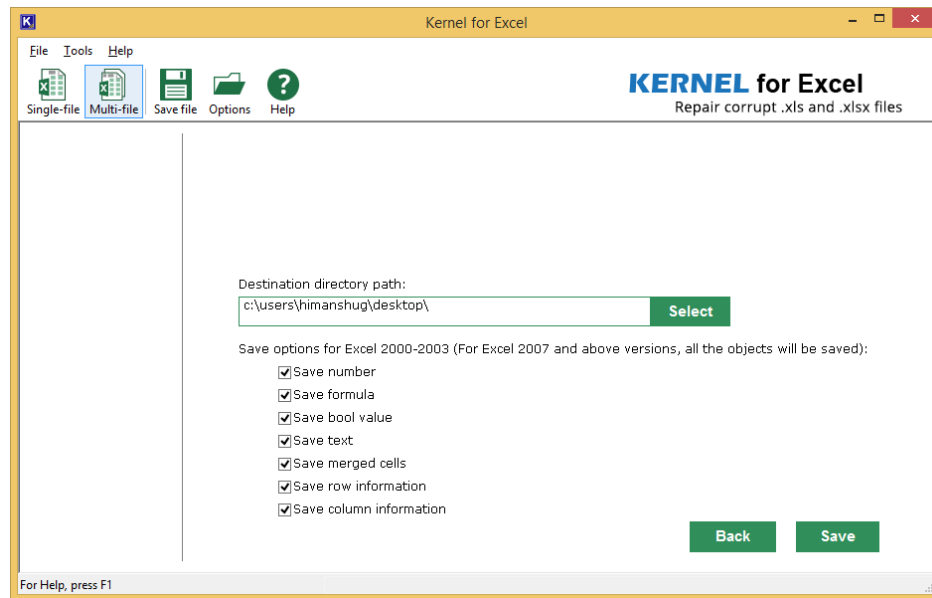
The **Multi-file** option repairs 100's of corrupted MS Excel Worksheets in one repair cycle. To start with the multiple file repair process:


1. Select **Multi-file** option from the tool bar and click the **Add files** button to add multiple files to the software. Click the **Repair and Save** button to start the repairing process.



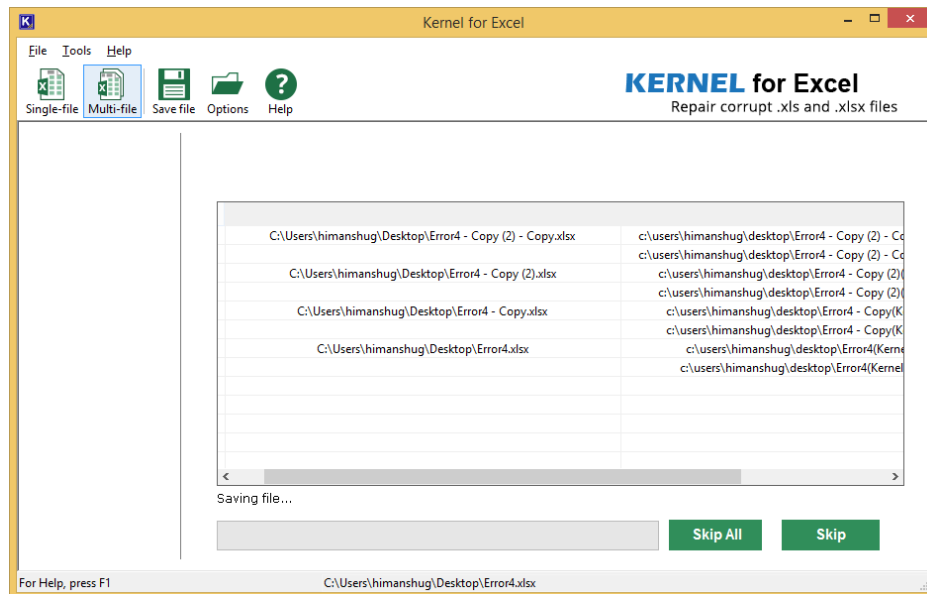
 You can remove selected file or remove all files from the list by clicking **Remove File** or **Remove All Files** button respectively.


2. Now browse the location where you want to save the repaired file, and then hit the **Save** button.



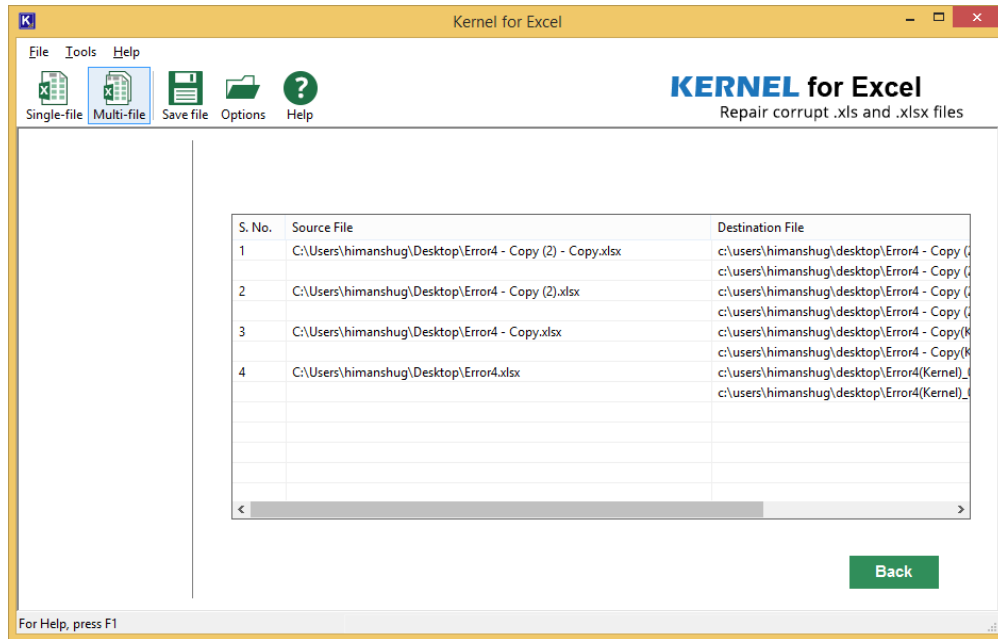
 Kernel for Excel Repair asks you to define your priorities to save from the repaired file. Select or de-select the checkboxes as per requirement and function.

- You can skip the saving process of all the repaired files or selected repaired files. Select **Skip All** or **Skip** button to skip the saving of all files or selected files respectively.



 The names of the repaired .xls files will be the original file name suffixed by the text which was defined by you in the **Recovered file suffix** text box.

- Once the files are repaired, they will be saved at the desired location. You can see the file location in the tool.



5. Conclusion

The Configuration Manual is handy to configure and use the program to repair and recover .XLS files. Learn more about the product and its benefits here: <https://www.nucleustechnologies.com/repair-excel-file.php>

6. Support

Connect to our experts immediately while facing any issues during installation, configuration, or associated matters.

Product Experts

USA/Canada: +1-800-814-0578

UK/Europe: +44 (0) -845-594-3766

Rest of the World: +91 (0) -991-004-9028

Technical Gurus

USA/Canada: +1-800-814-0578

UK/Europe: +44(0)-800-088-5478

Rest of the World: +91(0)-991-085-4291

Additionally, you can connect with us at <https://www.nucleustechnologies.com/Contact.html> to submit your query, or chat with one of our support team.

Moreover, you can write to us to the following email addresses:

- sales@nucleustechnologies.com (for Sales Queries)
- support@nucleustechnologies.com (for Support Queries)

7. Copyright

KernelApps Private Limited, KernelApps accompanied Installation & configuration manual, and documentation are copyright of KernelApps Private Limited, with all rights reserved. Under the copyright laws, this user manual cannot be reproduced in any form without the prior written permission of KernelApps Private Limited. No Patent Liability is assumed, with respect to the use of the information contained herein.

© KernelApps Private Limited. All rights reserved.

-end-